

haus.

Australia.

Haus Group Australia Pty Ltd
Factory 4 - 19 Columbia Court
DANDENONG SOUTH Victoria Australia 3175

t. (AU) 03 8593 9600 f. (AU) 03 8593 9699
e. info@hausgroup.com.au
w. www.hausgroup.com.au

New Zealand.

Haus Group New Zealand Ltd
t. (NZ) 09 887 6959 f. (NZ) 09 887 6958
e. info@hausgroup.co.nz
w. www.hausgroup.co.nz

Commercial.

Architects, Builders, Developers & Interior Designers
Do you have commercial project requirements? Please contact us
and ask to speak with a member of our commercial team.

t. (AU) 03 8593 9600 t. (NZ) 09 887 6959
e. commercial@hausgroup.com.au
w. commercial.hausgroup.com.au

 www.whispair.com.au // www.whispair.co.nz

Whispair is proudly Australian owned.
All Whispair hoods are designed and built in Australia.

whispair

whispair



02 - 09	Whispair Lifestyle Inspiration.
10 - 11	KleenAir Motor Systems. Introduction.
12 - 13	KleenAir Motor Systems. On Board Motor Technology.
14 - 15	KleenAir Motor Systems. Remote Motor Technology.
16 - 17	Craftsmanship. Stainless Steel.
18 - 19	Your Hood. Your Colour. Your Way.
20	Sound Pressure Levels.
20 - 21	S-Flow Baffle Filtration.
22 - 23	MasterMind Electronic System. Endurance Warranty.
24 - 25	Zilikon Duct.
26 - 27	Make Up Air. Technology Explained.
28 - 39	Undermount Hoods,
40 - 45	Wall Mounted Canopies,
46 - 53	Island Mounted Canopies & Ceiling Cassettes,
54 - 59	Alfresco (BBQ) Hoods,
60 - 65	Make Up Air.
66 - 72	Accessories.
68	Hood Accessories.
69	On Board Hood Accessories. Ducting Kits.
70 - 71	KleenAir Motor Systems. Remote Motor Installation Solutions.
71	Remote Motor Accessories. Install Kits.
72	Rigid Duct Accessories.



The Rangehood Reimagined.

It's complex yet so simple.

The most complicated design skill is to be simple yet effective. The development of Whispair hoods is underpinned by three key pillars - Innovative Design. Performance. Quiet Operation.

Finding the balance between superior air movement and low levels of noise can be difficult to manage. Whispair, an Australian brand that specialises in the design of premium quality rangehood systems, utilising revolutionary technology called KleanAir, that doesn't rely on finding a balance between air movement and noise.

With Whispair you have the choice between two motor types - on board or remote. The traditional on-board solution housed within the hood itself is available in two motor sizes whilst the remote motor solutions completely removes the powerful fan from the range hood and places it away from the kitchen, considerably reducing operating noise whilst still achieving high levels of extraction performance.

A rangehood is designed to extract heat, steam, grease and odour from your kitchen environment. Whispair's innovative KleanAir motor technology takes this process to a new level of performance, making it different from most others. **It's Whispair. It works.**

Award winning extraction technology.



GOOD
DESIGN
AWARD
WINNER

Product Shown: Whispair Zurich 120 Island Canopy - Brushed Brass

whispair



Product Shown: Whispair Stockholm 90 Island Canopy - Satin Black



Product Shown: Whispair Paris 36 Island Canopies - Matte Black

Maximum performance never looked so good.

whispair



Product Shown: Whispair Helsinki 90 Island Canopy - Brushed Black Metal



Unrivalled Australian Innovation.

Whispair is Australia's most comprehensive rangehood solution offering an array of motor configurations to satisfy your installation requirements. Options include:

Remote External – strategically placed at the end of the ducting to enable the distance from the motor to the external environment to be kept to a minimum whilst the operational noise is eliminated from the kitchen. The universally mountable external solution can be installed either through the wall or through the roof.

Remote Inline – the fan motor is placed in your roof space or sub floor – ideal for two-storey installations or where the fan cannot be located outside. The remote inline fan is then vented to the atmosphere through the wall or eave.

On Board – the 'conventional' solution where the motor is located inside the hood. Offering two highly efficient variations, Whispair's on board technology is a market leader incorporating technologies such as electronically commutated ("EC") motors where the operational noise of the motor is eliminated whilst having the ability to manage large system pressures. This means the hood can sustain small filtration zones and longer ducting runs without compromising extraction performance.

Whispair utilises only the best German-made fan motors exclusively from EBM-papst.

The Whispair difference.



10 YEAR WARRANTY
REPLACEMENT REMOTE FAN MOTOR

STEP 01

Select your hood style

Undermount - Wall mounted canopies - Island mounted canopies - Ceiling Cassettes - Alfresco (BBQ) canopies

STEP 02

Select your motor position

External Remote Motor - Inline Remote Motor - On Board Motor

STEP 03

Select your motor size

Remote - 800m³/hr, 1140m³/hr or 2010m³/hr
On Board - 1020m³/hr or 1680m³/hr

Lite	800m³/hr
Power	1020m³/hr
Pro	1140m³/hr
Ultra	1680m³/hr
Pro Plus	2010m³/hr



whispair

Robust Design. KleenAir On Board Fan Motor Technology.

Designed without compromise and made in Germany by market leader, EBM-papst, the Whispair range of KleenAir on board fan blowers are specifically tailored to meet the needs of the range hood application.

A premium motor solution that delivers exceptional extraction performance, the *Power 1020* (max 1,020m³/hr) is optimised for high efficiency, good acoustic and vibration performance and a long service life.

Whilst the revolutionary *Ultra 1680* (max 1,680m³/hr) utilises the powerful and efficient electronically commutated ("EC") motor which eliminates the fans operating noise. The primary benefit of KleenAir EC technology is the fan's ability to manage large system pressures (airflow resistance).

This means the hood can sustain small filtration zones and longer ducting runs without compromising extraction performance. The KleenAir Ultra motor is extremely quiet and can be up to 90% more efficient when compared to a conventional AC equivalent.

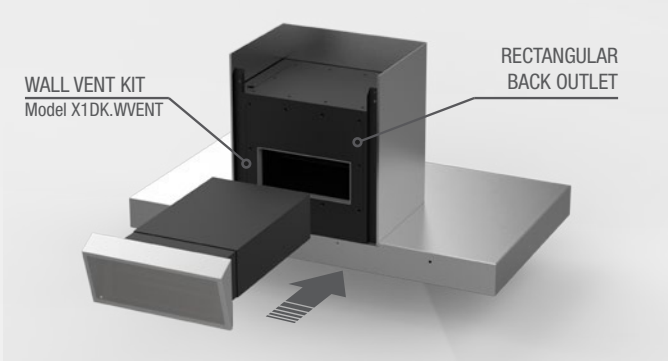
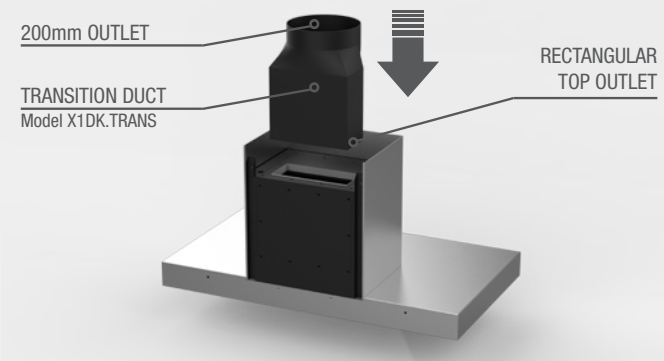
High Efficiency. High Air Flow. Low Operational Noise.



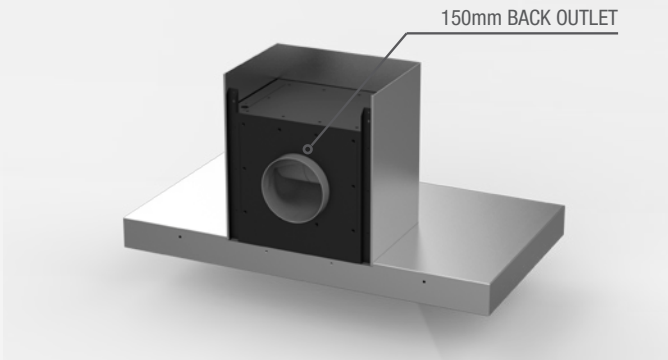
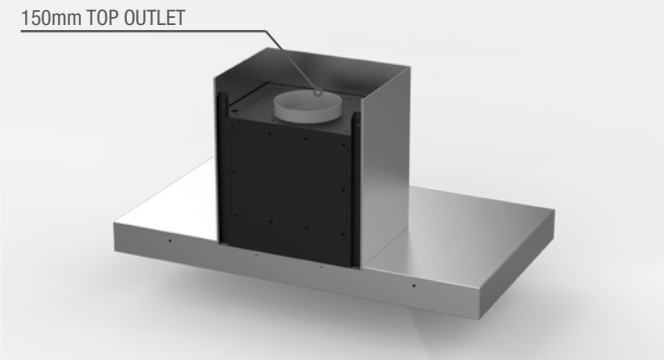
Outlet Options.

The versatile design of Whispair hoods allows the exhaust outlet to be mounted on the top or rear (excludes Island or cassette units). Although most installations would suit the outlet through the top of the hood, in some instances a rear installation is much more convenient.

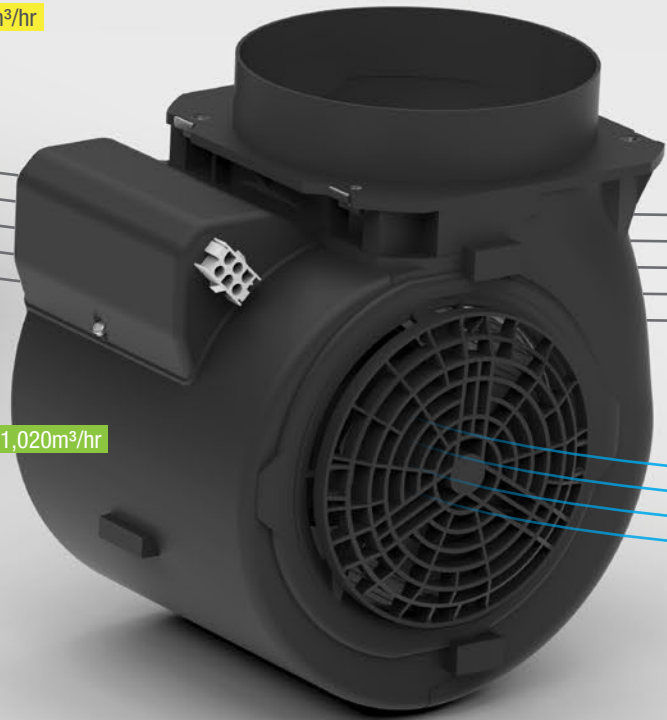
Ultra 1680 On Board Motor Solution - Rectangular Outlet (226mm x 97mm)



Power 1020 On Board Motor Solution - Round (Dia. 150mm Outlet)



Ultra 1,680m³/hr



Power 1,020m³/hr



whispair

Revolutionary. Powerful. KleenAir Remote Fan Motor Technology.

The KleenAir remote motor extraction system is unique in technology and superior in performance, delivering what other domestic extraction units can't.

Most conventional extraction fans used in domestic rangehood applications are designed to suck air in but struggle to expel the air due to the proximity of the motor in relation to the external vent.

KleenAir remote motor units are strategically placed near or at the end of the ducting to enable the distance from the motor to the external environment to be kept to a minimum.

Two housing variations, external or inline, combined with three German fan motor options provide several extraction and installation alternatives to satisfy most user requirements.

Whispair's KleenAir fan technology utilise three quality German fan motors to offer varying performance alternatives.

The KleenAir Lite offers an 800m³/hr extraction rate and is available in two housing options. Similarly, the KleenAir Pro is optioned with both housing solutions but offers a versatile 1140m³/hr extraction rate.

For the discerning user, the KleenAir Pro Plus was specifically designed for alfresco applications. Boasting a market leading 2010m³/hr extraction rate, the Pro Plus unit is only available in external (through roof or wall) mounted position.

Offering world leading Australian design, ingenuity and manufacture, Whispair together with the KleenAir remote motor technology personifies superior form and function.

High Efficiency. High Air Flow. Low Operational Noise.



10 YEAR WARRANTY
REPLACEMENT REMOTE FAN MOTOR

1 Easy Installation

The KleenAir Inline unit is equipped with an anti-vibration mounting bar that enables for quick and easy installation.

The *universal* KleenAir External unit allows for a single-person installation. Incorporating a detachable rigid duct that allows the installer to mount the light weight duct with ease before placing the top cowl and motor in place.

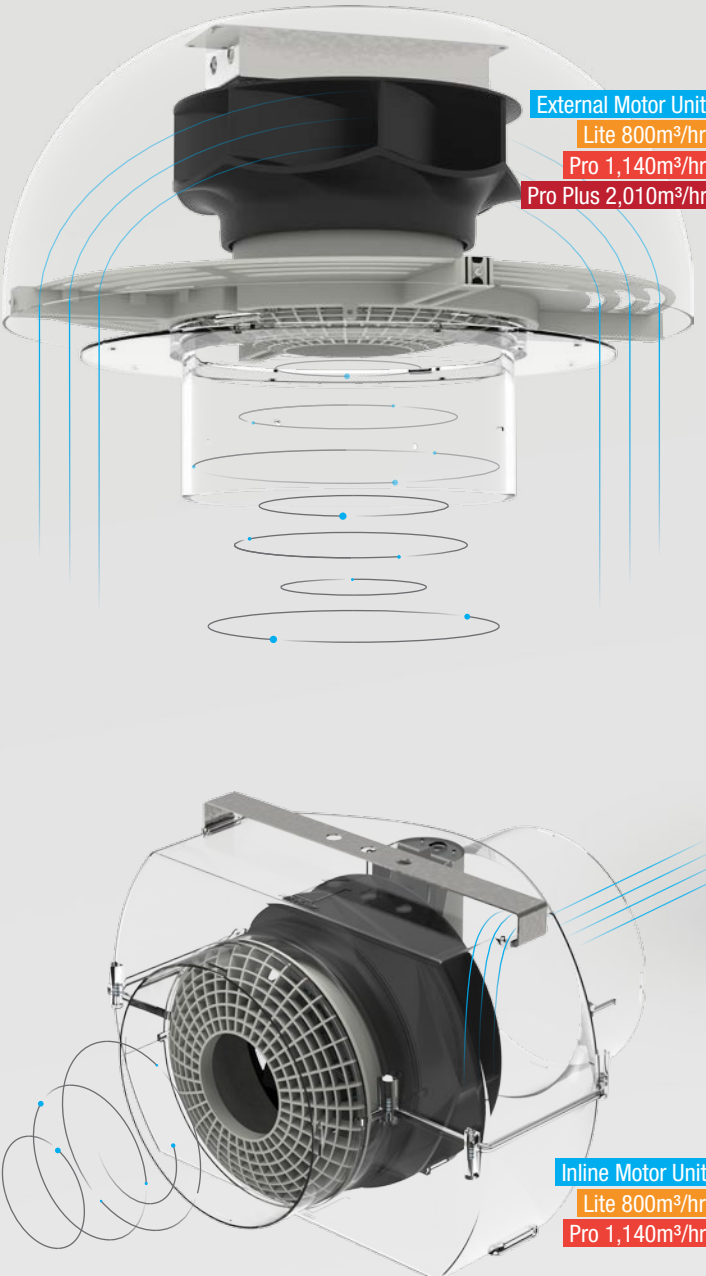
2 Protective Finger Guard

Exceeding the requirements stipulated by the Australian and New Zealand standards, the KleenAir External unit features the markets most advanced ingress protection. The design limits dust and water entering the housing as well as a finger guard that protects users from coming into contact with the fan impeller during cleaning and maintenance.



3 Quality Housings

KleenAir units utilise only the highest grade materials to sustain even the toughest conditions forming a long lasting solution.



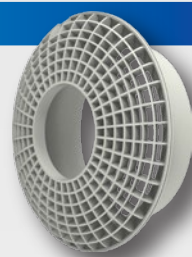
External Motor Unit
Lite 800m³/hr
Pro 1,140m³/hr
Pro Plus 2,010m³/hr

Inline Motor Unit
Lite 800m³/hr
Pro 1,140m³/hr

4 Inlet Cone & Flow Grid

KleenAir remote motor units are fitted with a specially designed and unrivalled inlet cone and grid. The contoured pieces are designed to manage the air flow into the impeller.

By controlling and directing the air flow efficiently, the inlet cone and grid minimise turbulence, increasing efficiency and reduce operating noise.

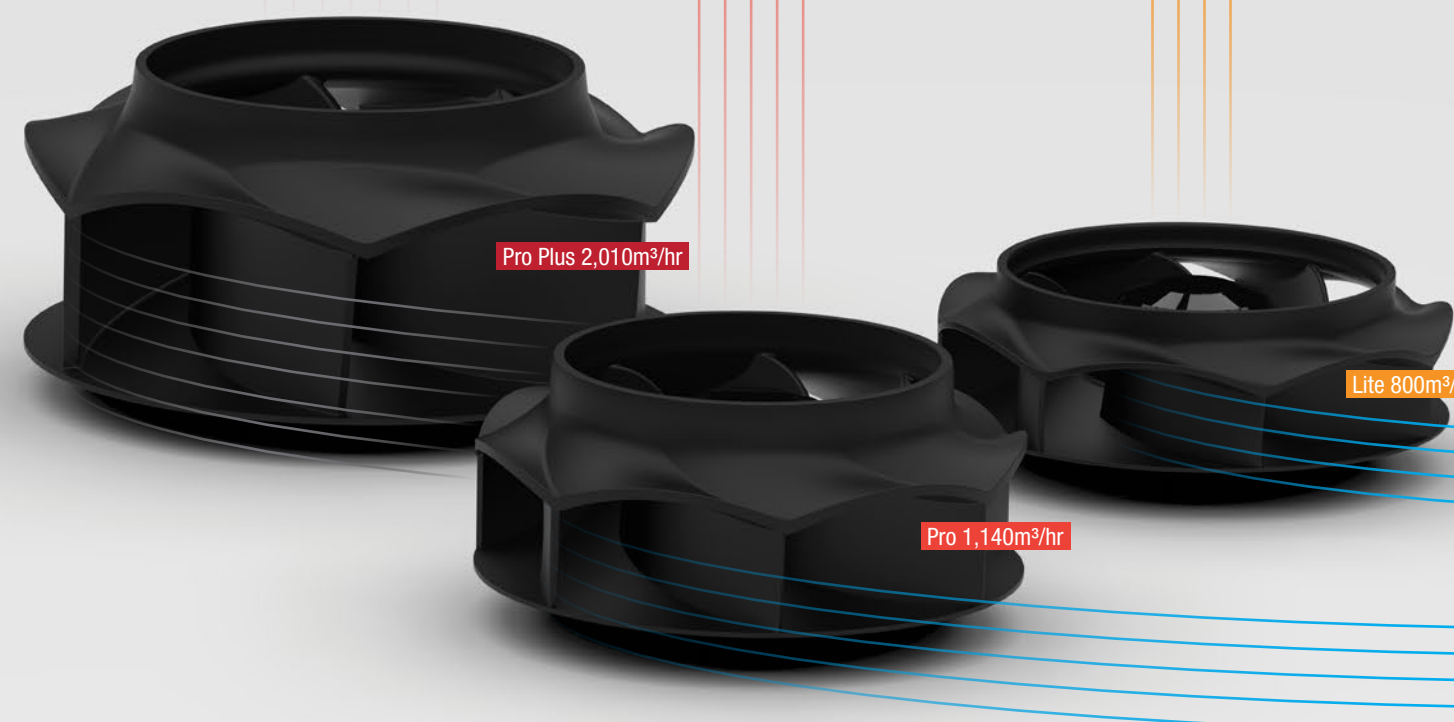


5 Zilikon Flexible Acoustic Ducting

All KleenAir remote motor systems come with 5 metres of *Zilikon* flexible acoustic ducting and stainless steel fixing clamps.

6 Optional Wall Mounting Plate

A wall mounting plate (Model X1IK.EWM) is available for fitting the KleenAir External unit to a wall. Utilising the plate provides protection to the wall finish whilst the contoured surface assists with directing air from the outlet.



MADE IN
GERMANY

whispair

Craftsmanship. Stainless Steel.

Crafted from the highest quality AISI304 18/10 'Food grade' stainless steel (18% chrome & 10% nickel alloy composite), Whispair's range of indoor hoods is a masterclass in metal fabrication.

The alfresco (BBQ) hood range is uniquely fabricated from AISI316 'Marine grade' stainless steel ensuring that even in coastal conditions your hood will stand the test of time.

With seamless joins and thick gauge (1.0 to 1.2mm) material, each manufacturing process is carefully carried out to ensure that the stainless steel remains without imperfection. All Whispair stainless steel is hand polished to guarantee the finest finish.



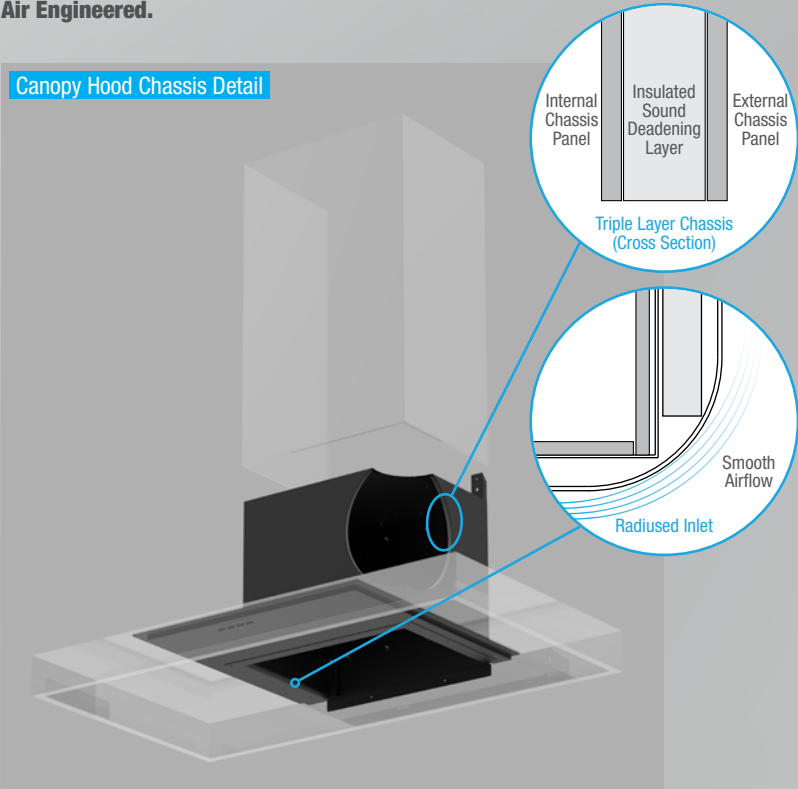
Attention to detail. Even when you're not looking.

Whispair wall and island mounted canopies come with a *Triple Layer Insulated* chassis where the internal chassis has an internal and external steel skin separated by an insulated sound deadening high density foam layer. This structure acts to absorb and deaden operational air and motor noise.

Additionally, Whispair canopies have a *Radiused Chassis Inlet*. Smooth surfaces and smooth edges promote smooth airflow and less noise.

Air Engineered.

Canopy Hood Chassis Detail



Do you have the desire to be different?

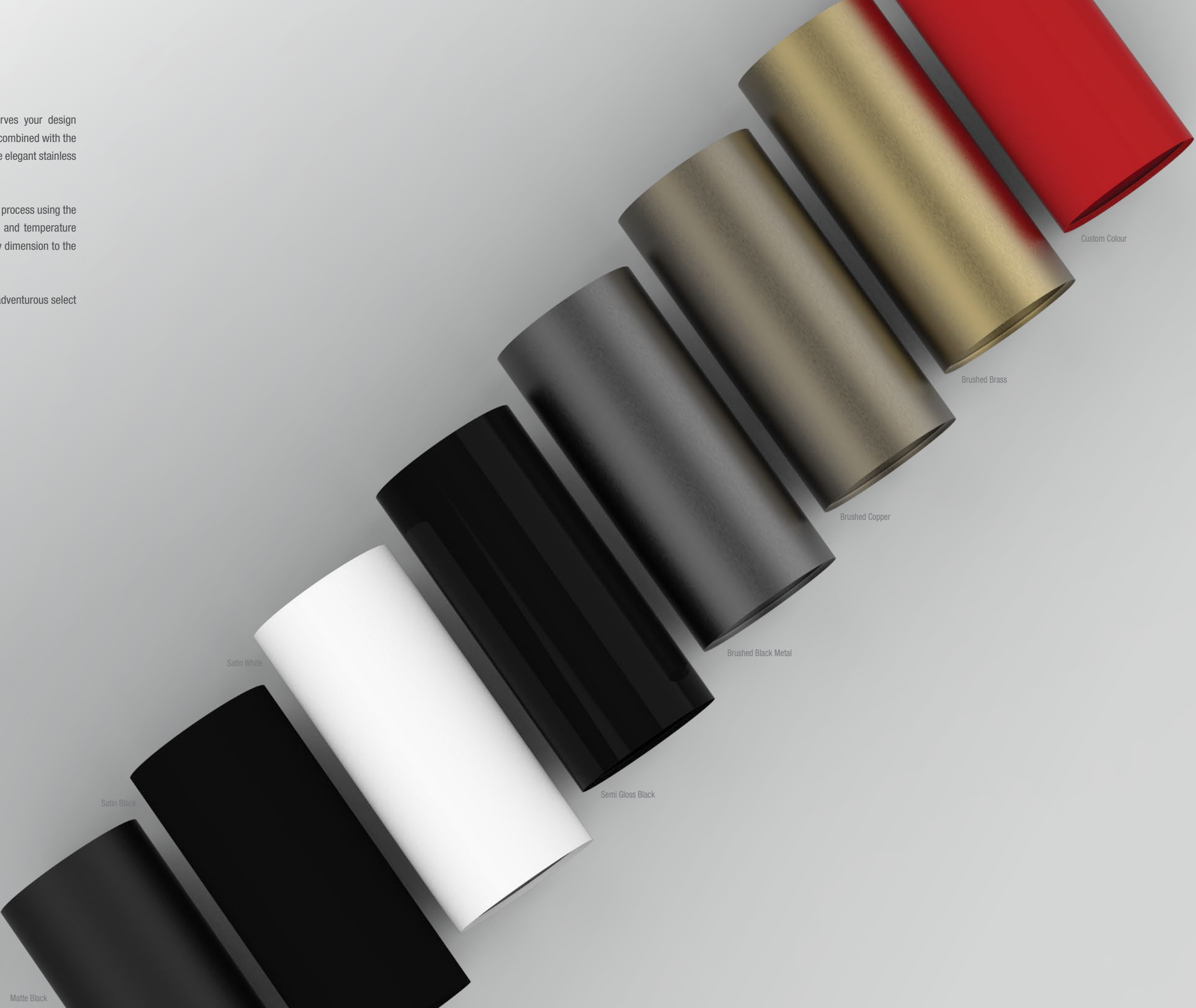
Well, we are here to help!

Whispair's "Your Hood – Your Colour – Your Way" serves your design accents and your kitchen décor exactly. The colours are combined with the stainless steel hood chassis and chimneys contrasting the elegant stainless steel baffle filters.

Whispair colours are applied in a durable powder coating process using the latest surface technologies. The finish is hard wearing and temperature resistant to give you a long-lasting lustre, bringing a new dimension to the design style of your kitchen.

Available in a range of 'standard' colours or for the truly adventurous select your own custom (RAL) colour.

A personality statement.





Sound. The Phenomenon.

It's time to enjoy your kitchen.

Sound is a complex engineering concept. Reducing sound from an extraction system can be complicated and influenced by the kitchens surroundings. The two primary sources of noise from a hood are the fan motor operation as well as the air passing through the filters.

Whispair, has redefined what it means to have a quiet rangehood. The remote motor solutions remove the fan motor to be outside the kitchen whilst the on-board Ultra motor adopts "EC" technology that eliminates any 'cap-hum' that may exhibited by conventional rangehood units.

The integration of S-Flow Baffle Filters also assists in minimising air noise by promoting laminar air flow whilst maximising the flow rate.

The variances from one Whispair hood model to next is minimal so we have conducted extensive experiments to develop a 'nominal' set of data that is applicable to our entire product range.

Nominal Sound Pressure Levels (when operated on Boost Mode), by the numbers - -

- On Board Power 1020 - SPL: 53.9dB(A) Indoor
- On Board Ultra 1680 - SPL: 56.5dB(A) Indoor
- Remote Lite 800 - SPL: 39.3dB(A) Indoor // 52.7dB(A) Outdoor
- Remote Pro 1140 - SPL: 49.6dB(A) Indoor // 58.5dB(A) Outdoor
- Remote Pro Plus 2010 - SPL: 56.6dB(A) Indoor // 62.8dB(A) Outdoor

Quiet. Peaceful. Whispair.



Long Life. S-Flow Baffle Filtration.

Why baffle filters are so important to your kitchen.

- Rangehood filters are designed to capture two of the four by-products created during the cooking process - moisture and grease
- Other by-products such as heat and odour need to be evacuated completely from the home
- Baffle filters offer the best form of rangehood filtration
- Reduced air noise through the filtration zone when compared to conventional mesh filters
- Commonly found in commercial restaurant kitchens
- High grade 100% dishwasher safe stainless steel
- Easy to remove filters and grease trap for ease of cleaning

Never loses suction. When only the best will do.



A. 100% stainless steel
More robust and long-lasting construction that can be maintained without deterioration

B. Commercial grade
Thicker (25mm) commercial-grade filters featured in all Whispair hoods

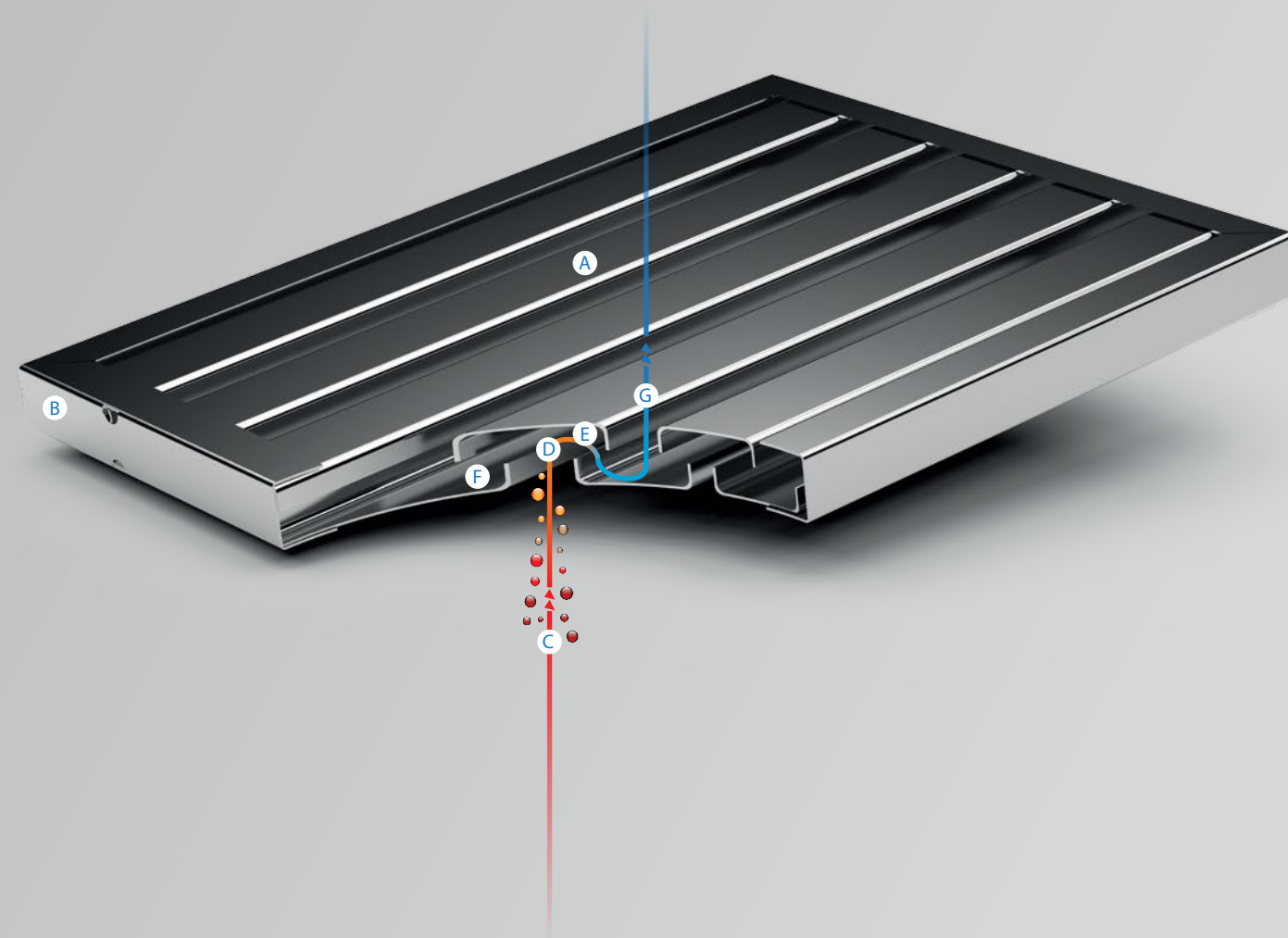
C. By-Product
Hot air carries by-products from cooking surface

D. No loss of extraction
Increased air flow is maintained even as the filter 'fills' with grease and oil

E. Capture
Heavier grease and moisture particles captured

F. Induction cooktop ready
Excess grease and moisture drips into lower channel or grease trap rather than on to the cooking surface

G. Ventilate
Odour and heat pass through the filter and are exhausted to the outside environment



MasterMind.

The little black box that gives you peace of mind.

All Whispair rangehoods utilise the exclusive and sophisticated mastermind electronic system.

Offering an array of functions, such as an auto off timer and 'boost' speed, mastermind incorporates the finest electronic components available coupled with a fully embedded computer board to ensure that the 'intelligence' of every Whispair rangehood remains protected from even the most intensive styles of cooking. With mastermind you are assured that your rangehood will stand the test of time.

Long lasting and highly energy efficient (1W) LED lights are found in all Whispair rangehoods. The LED lighting produces a warm radiance (Colour Temperature: 3100K) that brings out the natural colour and textures during the cooking process, whilst reducing the energy consumption by at least 98% over a traditional 60W incandescent globe. The Whispair LED is easy to replace and the rectangular shape of the LED diffuses the light to give full coverage across the cooking surface.

Some people ask why we talk about our electronic system.
We ask why *some people* don't.



Whispair Endurance Warranty.

Talk's cheap.

That's why with Whispair, we back our products with a market-leading **5-Year comprehensive parts and labour warranty**, combined with a **10-Year remote motor replacement warranty**.

We believe in our products so much that we also offer a **lifetime replacement warranty** on 'plug-&-play' electronic parts including lighting. The experience you have with our product is important to us and this unprecedented offer of warranty signifies this fact.

It's our philosophy that every time one of products leaves our factory that we have created a customer for life.

Genuine commitment.



Zilikon Duct.

Designed to work.

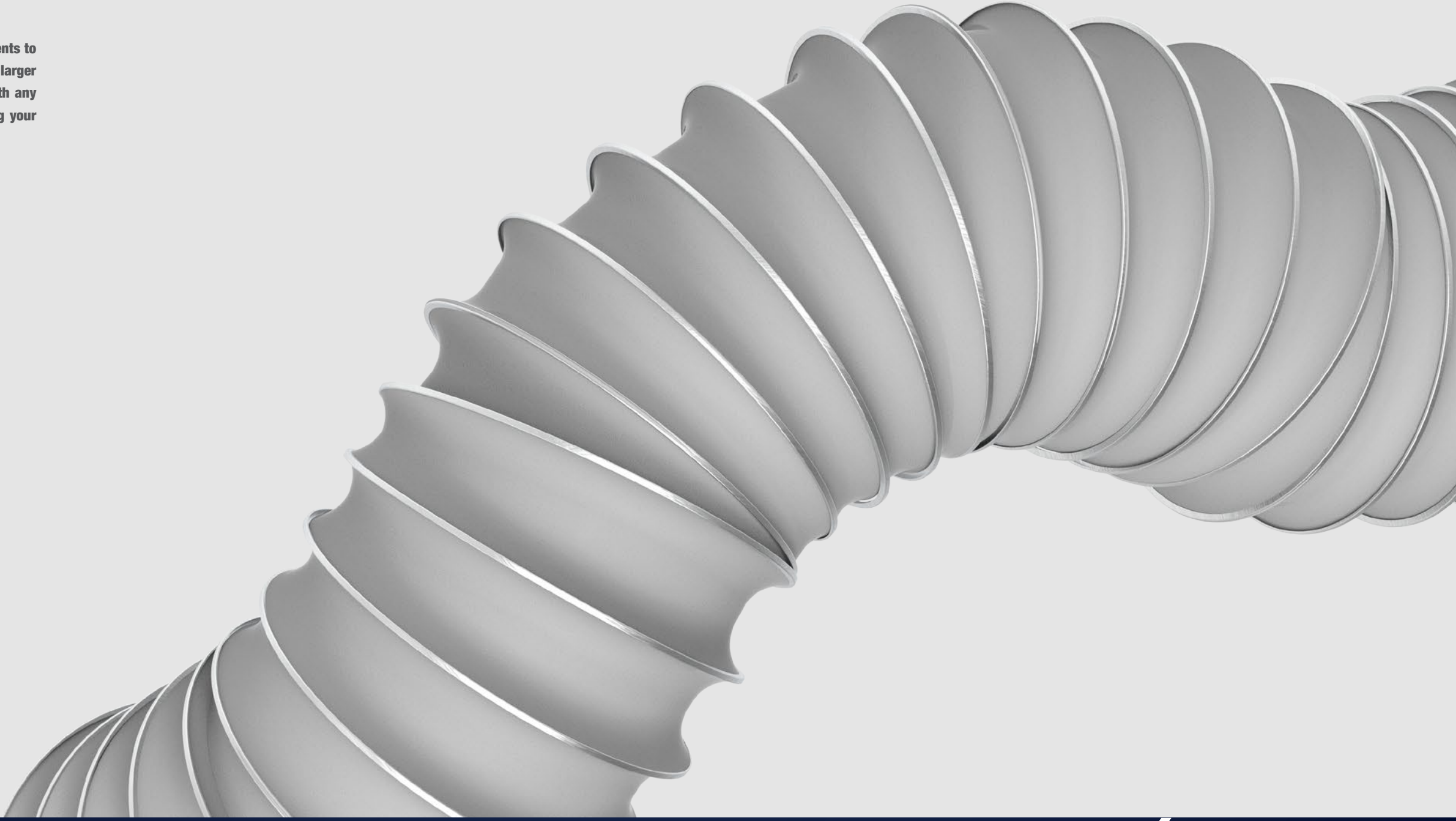
Designed to operate with minimum system pressure to maximise flowrate, the Whispair Zilikon ducting comes as a standard inclusion with all Whispair remote motor units and can be purchased in a duct kit for the on board motor solutions.

With added advantages such as being crush resistant, pest repellent and fire proof, the Zilikon ducting exhibits antimicrobial properties that makes it mould resistant.

Safer and easier to install than some cumbersome ducting systems, Zilikon is tear and puncture proof.

Whispair offers a comprehensive range of ducting solutions to satisfy any installation requirement.

Did you know -- Ducting is one of the most important elements to the performance of your rangehood and maintaining larger diameters and ensuring that the ducting is pulled tight with any excess duct removed from the run is critical to maximising your hood performance.



Make Up Air.

In today's modern building environment, efforts are being made to make homes more energy efficient preventing fresh air from entering the home. Typically, replacement or 'make-up air' will infiltrate through leaks in the building shell, door jams, windows and other uncontrolled sources.

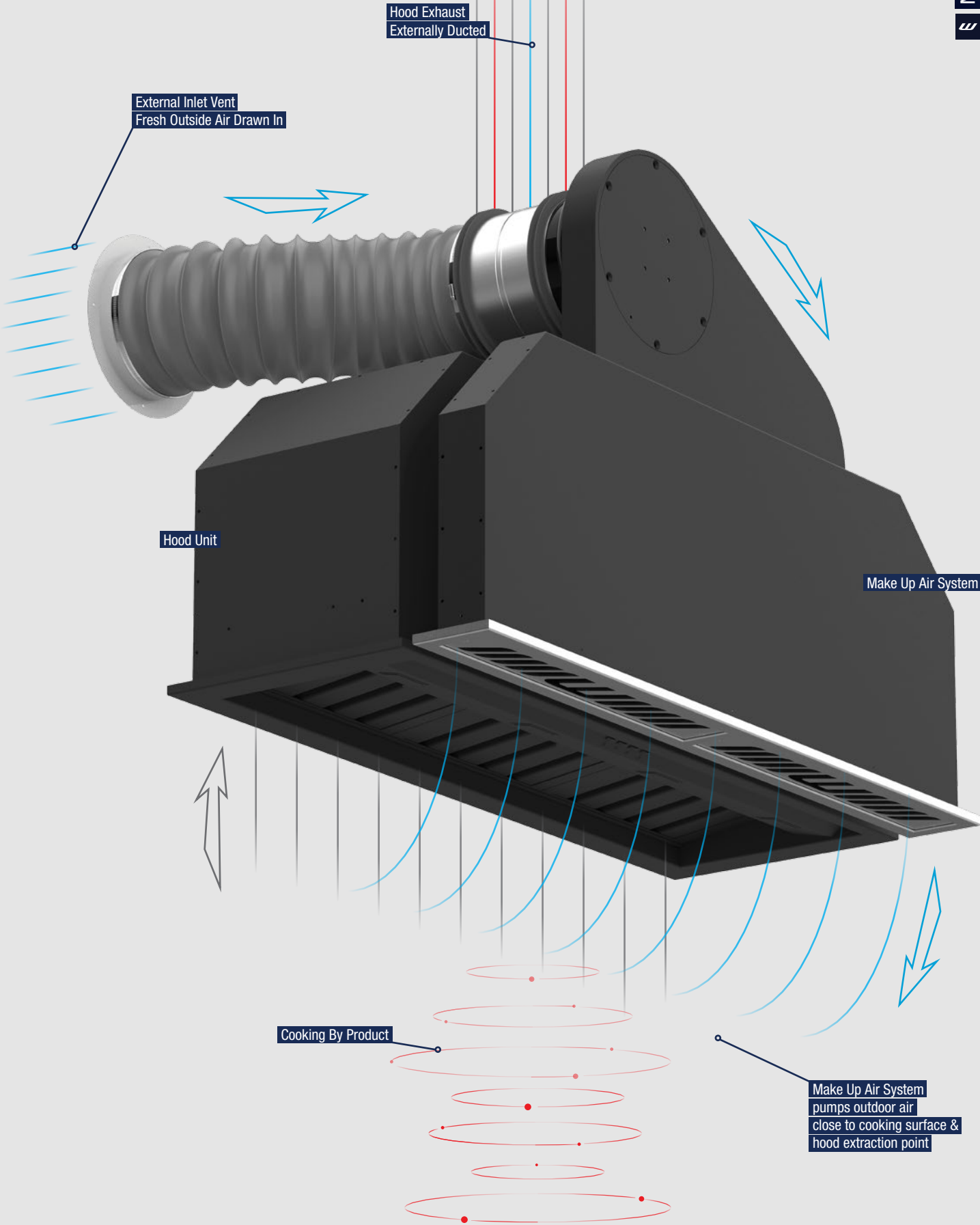
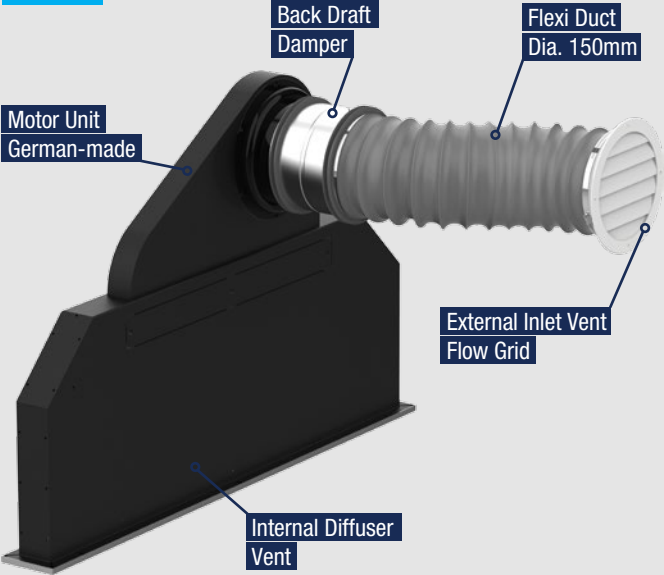
This bid to make houses airtight or 'passive' and without air being replenished into the room lead to compromised air quality and appliance inefficiency.

Whispair's 'localised' make up air system, delivers fresh outside air directly to the hood, pressurising the area around the hood to assist in promoting positive airflow.

The make-up air system is synchronised to the hood to ensure the amount of fresh air supplied matches the hood system requirement.

Creating a healthier environment for your family.

Make Up Air System
Rear View





Monte Carlo 120 Mega Deep

whisper



Monte Carlo 160 Super Deep

UNDERMOUNT HOODS.

Monte Carlo - Super Deep

380mm Deep

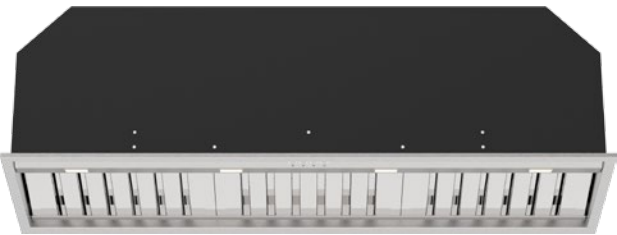


Monte Carlo 90 Super Deep, X3MD09S
W 860mm
D 380mm
H 330mm



Scan For
Technical Details

OP OU IL IP EL EP EPP



Monte Carlo 120 Super Deep, X3MD12S
W 1160mm
D 380mm
H 330mm



Scan For
Technical Details

OP OU IP EP EPP



Monte Carlo 160 Super Deep, X3MD16S
W 1560mm
D 380mm
H 330mm



Scan For
Technical Details

OU Twin IP Twin EP Twin EPP Twin

OP On Board Power - 1020m³/hr -- OU On Board Ultra - 1680m³/hr -- IL Inline Lite - 800m³/hr -- IP Inline Pro - 1140m³/hr
EL External Lite - 800m³/hr -- EP External Pro - 1140m³/hr -- EPP External Pro Plus - 2010m³/hr

Available Finishes - Your Hood. Your Colour. Your Way.



Satin White - X1P3.WH



Matte Black - X1P3.MBL



Satin Black - X1P3.BL



Semi Gloss Black - X1P3.SGB



Brushed Black Metal - X1P3.BBM



Brushed Brass - X1P3.BBR



Brushed Copper - X1P3.BCU



Custom Colour - X1P3.CUS

whispair



Monte Carlo 120 Mega Deep

UNDERMOUNT HOODS.

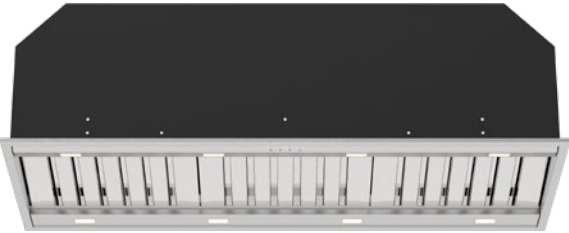
Monte Carlo - Mega Deep 480mm Deep



Monte Carlo 90 Mega Deep, X3MM09S
W 860mm
D 480mm
H 330mm



OU IP EP EPP



Monte Carlo 120 Mega Deep, X3MM12S
W 1160mm
D 480mm
H 330mm



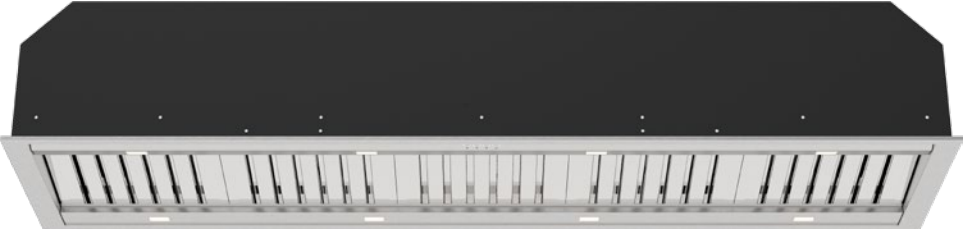
OU IP EP EPP
OU Twin IP Twin EP Twin EPP Twin



Monte Carlo 160 Mega Deep, X3MM16S
W 1560mm
D 480mm
H 330mm



OU Twin IP Twin EP Twin EPP Twin



Monte Carlo 200 Mega Deep, X3MM20S
W 1960mm
D 480mm
H 330mm



OU Twin IP Twin EP Twin EPP Twin

OU On Board Ultra - 1680m³/hr -- IP Inline Pro - 1140m³/hr -- EP External Pro - 1140m³/hr -- EPP External Pro Plus - 2010m³/hr

Available Finishes - Your Hood. Your Colour. Your Way.



Satin White - X1P3.WH



Matte Black - X1P3.MBL



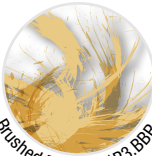
Satin Black - X1P3.BL



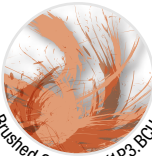
Semi Gloss Black - X1P3.SGB



Brushed Black Metal - X1P3.BBM



Brushed Brass - X1P3.BBR



Brushed Copper - X1P3.BCU



Custom Colour - X1P3.CUS



Toronto 120

UNDERMOUNT HOODS.

Toronto

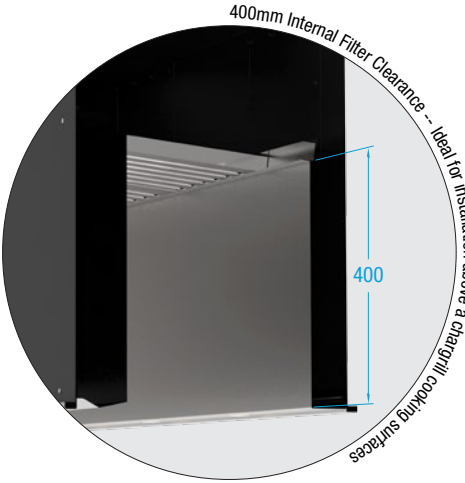
480mm Deep - 1200mm Filter Clearance



Toronto 120, X3T12S
W 1160mm
D 480mm
H 660mm



OU Twin IP Twin EP Twin EPP Twin



Toronto 160, X3T16S
W 1560mm
D 480mm
H 660mm



OU Twin IP Twin EP Twin EPP Twin

OU On Board Ultra - 1680m³/hr -- IP Inline Pro - 1140m³/hr -- EP External Pro - 1140m³/hr -- EPP External Pro Plus - 2010m³/hr

Available Finishes - Your Hood. Your Colour. Your Way.



Satin White - X1P3.WH



Matte Black - X1P3.MBL



Satin Black - X1P3.BL



Semi Gloss Black - X1P3.SGB



Brushed Black Metal - X1P3.BBM



Brushed Brass - X1P3.BBR



Brushed Copper - X1P3.BCU



Custom Colour - X1P3.CUS

whispair



Monte Carlo 160 Super Deep

UNDERMOUNT HOODS.

Specifications																	
		Monte Carlo 60	Monte Carlo 80	Monte Carlo 90	Monte Carlo 120	Monte Carlo 160	Monte Carlo 90 Super Deep	Monte Carlo 120 Super Deep	Monte Carlo 160 Super Deep	Monte Carlo 90 Mega Deep	Monte Carlo 120 Mega Deep	Monte Carlo 160 Mega Deep	Monte Carlo 200 Mega Deep	Toronto 120	Toronto 160		
Model No.		X3M06S	X3M08S	X3M09S	X3M12S	X3M16S	X3MD09S	X3MD12S	X3MD16S	X3MM09S	X3MM12S	X3MM16S	X3MM20S	X3T12S	X3T16S		
Hood Mounting		Built In (Undermount) - Flush or Proud Install (ref. pp 68)															
Dimensions	Hood Width	560mm	760mm	860mm	1160mm	1560mm	860mm	1160mm	1560mm	860mm	1160mm	1560mm	1960mm	1160mm	1560mm		
	Hood Depth	280mm					380mm			480mm							
	Hood Height	330mm												660mm			
Cooking Surface Coverage (cm)		50-75	70-90	75-100	100-120	120-170	75-100	100-120	120-160	75-100	100-120	120-160	150-200	100-120	120-160		
Min Install Height		600mm												800mm			
Recommended Install Height		700-750mm												800mm			
Induction Suitable		●	●	●	●	●	●	●	●	●	●	●	●	●	●		
Char Grill Suitable														●	●		
Finish	AISI304 1.2mm Food Grade	●	●	●	●	●	●	●	●								
	AISI316 1.2mm Marine Grade									●	●	●	●	●	●	●	
Filtration	Type: S-Flow Baffle	●	●	●	●	●	●	●	●	●	●	●	●	●	●		
	Filter Quantity	2	2	3	4	5	2	3	4	2	3	4	5	3	4		
Electronics	MasterMind	●	●	●	●	●	●	●	●	●	●	●	●	●	●		
	Controls	4-Button Backlit LED <i>MasterMind</i> Electronic Control															
	Wireless Remote	○	○	○	○	○	○	○	○	○	○	○	○	○	○		
	Speed Settings	3 Speed + Boost Mode															
	Timer Function	Programmable Timer - 10min Increments															
	Auto Fan Shut Off	Auto Off After 2-Hours Of Inactivity															
Lighting	Type: LED - Warm White	●	●	●	●	●	●	●	●	●	●	●	●	●	●		
	Type: LED - Cool White	○	○	○	○	○	○	○	○	○	○	○	○	○	○		
	Lamp Quantity	2	4	4	4	4	4	4	4	8	8	8	8	8	8		
	Front Panel	●	●	●	●	●	●	●	●	●	●	●	●	●	●		
	Rear Panel									●	●	●	●	●	●		
Exhaust	Outlet Position - Top	●	●	●	●	●	●	●	●	●	●	●	●	●	●		
	Outlet Position - Rear	○	○	○	○	○	○	○	○	○	○	○	○	○	○		
	Outlet Quantity	1	1	1	1	2	1	1	2	1	1 / 2	2	2	2	2		
	Ducting (Remote Motor)	Dia. 200mm <i>Zilikon</i> Acoustic Flexi Ducting - Five (5) Meter Length Supplied															
	Ducting (Onboard Motor)	Power Motor - Dia. 150mm -- Ultra Motor - Dia.200mm -- Accessory Kits Available (ref. pp 69)															
SELECT YOUR HOOD & MOTOR COMBINATION		X3M06S	X3M08S	X3M09S	X3M12S	X3M16S	X3MD09S	X3MD12S	X3MD16S	X3MM09S	X3MM12S	X3MM16S	X3MM20S	X3T12S	X3T16S		
On Board	Power 1020 - Top	1020m³/hr	.0P/T	.0P/T	.0P/T	.0P/T	--	.0P/T	.0P/T	--	--	--	--	--	--		
	Power 1020 - Rear	1020m³/hr	.0P/B	.0P/B	.0P/B	.0P/B	--	.0P/B	.0P/B	--	--	--	--	--	--		
	Ultra 1680 - Top	1680m³/hr	.0U/T	.0U/T	.0U/T	.0U/T	.20U/T	.0U/T	.0U/T	.20U/T	.0U/T	.0U/T (.20U/T)	.20U/T	.20U/T	.20U/T		
	Ultra 1680 - Rear	1680m³/hr	.0U/B	.0U/B	.0U/B	.0U/B	.20U/B	.0U/B	.0U/B	.20U/B	.0U/B	.0U/B (.20U/B)	.20U/B	.20U/B	.20U/B		
Inline	Lite 800	800m³/hr	.IL	.IL	.IL	--	--	.IL	--	--	--	--	--	--	--		
	Pro 1140	1140m³/hr	.IP	.IP	.IP	.IP	.2IP	.IP	.IP	.2IP	.IP	.IP / .2IP	.2IP	.2IP	.2IP		
External	Lite 800	800m³/hr	.EL	.EL	.EL	--	--	.EL	--	--	--	--	--	--	--		
	Pro 1140	1140m³/hr	.EP	.EP	.EP	.EP	.2EP	.EP	.EP	.2EP	.EP	.EP / .2EP	.2EP	.2EP	.2EP		
	Pro Plus 2010	2010m³/hr	--	.EPP	.EPP	.EPP	.2EPP	.EPP	.EPP	.2EPP	.EPP	.EPP / .2EPP	.2EPP	.2EPP	.2EPP		

● Standard Inclusion ○ Optional



PROUDLY AUSTRALIAN OWNED
DESIGNED & BUILT IN MELBOURNE



PREMIUM GERMAN MADE
MOTOR SYSTEMS

STEP 01

Select your hood style

STEP 02

Select your motor position

STEP 03

Select your motor size



Rome 90 (White Glass) in Satin White

whispair

London500mm Deep



London 90, X5L09S
W 900mm
D 500mm
H 50mm / 250mm (Flare Angle Height)



- OP
- OU
- IL
- IP
- EL
- EP
- EPP

Stockholm500mm Deep



Stockholm 60, X5S06S
W 600mm
D 500mm
H 75mm



- OP
- OU
- IL
- IP
- EL
- EP
- EPP

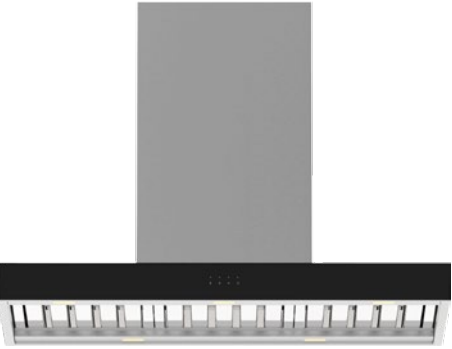


Stockholm 90, X5S09S
W 900mm
D 500mm
H 75mm



- OP
- OU
- IL
- IP
- EL
- EP
- EPP

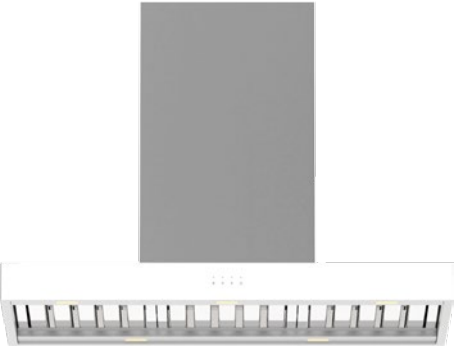
Rome500mm Deep



Rome 90 (Black Glass Fascia), X5R09S
W 900mm
D 500mm
H 75mm



- OP
- OU
- IL
- IP
- EL
- EP
- EPP



Rome 90 (White Glass Fascia), X5R09W
W 900mm
D 500mm
H 75mm



- OP
- OU
- IL
- IP
- EL
- EP
- EPP

Vienna500mm Deep



Vienna 90, X5V09S
W 900mm
D 500mm
H 120mm



- OP
- OU
- IL
- IP
- EL
- EP
- EPP



Vienna 120, X5V12S
W 1200mm
D 500mm
H 120mm



- OU
- IP
- EP
- EPP

- OP
- On Board Power - 1020m³/hr --
- OU
- On Board Ultra - 1680m³/hr --
- IL
- Inline Lite - 800m³/hr --
- IP
- Inline Pro - 1140m³/hr
-
- EL
- External Lite - 800m³/hr --
- EP
- External Pro - 1140m³/hr --
- EPP
- External Pro Plus - 2010m³/hr

Available Finishes - Your Hood. Your Colour. Your Way.



Satin White - X1P5.WH



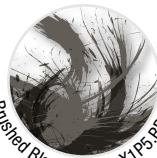
Matte Black - X1P5.MBL



Satin Black - X1P5.BL



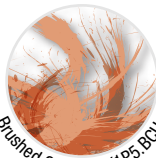
Semi Gloss Black - X1P5.SGB



Brushed Black Metal - X1P5.BBM



Brushed Brass - X1P5.BBR



Brushed Copper - X1P5.BCU



Custom Colour - X1P5.CUS



Rome 90 (White Glass) in Satin White

WALL MOUNTED HOODS.

Specifications							
		London 90	Stockholm 60	Stockholm 90	Rome 90 (Black Fascia)	Rome 90 (White Fascia)	
Model No.		X5L09S	X5S06S	X5S09S	X5R09S	X5R09W	X5V09S
Hood Mounting		Wall Mounted Canopy					
Dimensions	Hood Width	900mm	600mm	900mm	900mm	900mm	1200mm
	Hood Depth	500mm					
	Hood Fascia Height	50mm / 250mm	75mm			120mm	
Cooking Surface Coverage (cm)		75-100	60-75	75-100	75-100	75-100	100-120
Min Install Height		600mm					
Recommended Install Height		700-750mm					
Induction Suitable		●	●	●	●	●	●
Finish	AISI304 1.2mm Food Grade	●	●	●	●	●	●
Filtration	Type: S-Flow Baffle	●	●	●	●	●	●
	Filter Quantity	3	2	3	3	3	4
Electronics	MasterMind	●	●	●	●	●	●
	Controls	4-Button Backlit LED MasterMind Electronic Control			MasterMind Touch Control		MasterMind Electronic Control
	Wireless Remote	○	○	○	○	○	○
	Speed Settings	3 Speed + Boost Mode					
	Timer Function	Programmable Timer - 10min Increments					
Lighting	Auto Fan Shut Off	Auto Off After 2-Hours Of Inactivity					
	Type: LED - Warm White	●	●	●	●	●	●
	Type: LED - Cool White	○	○	○	○	○	○
	Lamp Quantity	5	4	5	5	5	8
	Front Panel	●	●	●	●	●	●
Exhaust	Rear Panel	●	●	●	●	●	●
	Outlet Position - Top	●	●	●	●	●	●
	Outlet Position - Rear	○	○	○	○	○	○
	Outlet Quantity	1	1	1	1	1	1
	Ducting (Remote Motor)	Dia. 200mm Zillikan Acoustic Flexi Ducting - Five (5) Meter Length Supplied					
Ducting (Onboard Motor)		Power Motor - Dia. 150mm -- Ultra Motor - Dia.200mm -- Accessory Kits Available (ref. pp 69)					
On Board		X5L09S	X5S06S	X5S09S	X5R09S	X5R09W	X5V09S
	Power 1020 - Top	1020m³/hr	.0P/T	.0P/T	.0P/T	.0P/T	.0P/T
	Power 1020 - Rear	1020m³/hr	.0P/B	.0P/B	.0P/B	.0P/B	.0P/B
	Ultra 1680 - Top	1680m³/hr	.0U/T	.0U/T	.0U/T	.0U/T	.0U/T
	Ultra 1680 - Rear	1680m³/hr	.0U/B	.0U/B	.0U/B	.0U/B	.0U/B
Inline	Lite 800	800m³/hr	.IL	.IL	.IL	.IL	.IL
	Pro 1140	1140m³/hr	.IP	.IP	.IP	.IP	.IP
External	Lite 800	800m³/hr	.EL	.EL	.EL	.EL	.EL
	Pro 1140	1140m³/hr	.EP	.EP	.EP	.EP	.EP
	Pro Plus 2010	2010m³/hr	.EPP	.EPP	.EPP	.EPP	.EPP

● Standard Inclusion ○ Optional

 PROUDLY AUSTRALIAN OWNED
DESIGNED & BUILT IN MELBOURNE

 PREMIUM GERMAN MADE
MOTOR SYSTEMS

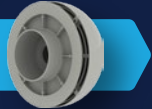
STEP 01

Select your hood style




STEP 02

Select your motor position



STEP 03

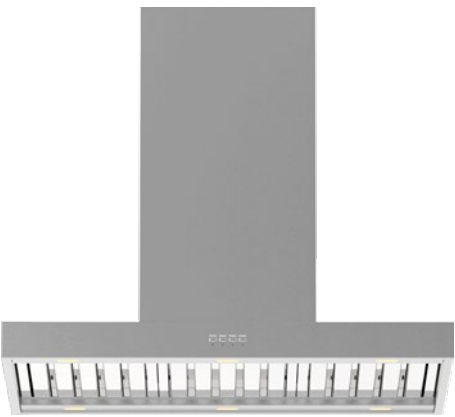
Select your motor size





Paris 36 (Twin) in Brushed Brass

Stockholm Island 600mm Deep



Stockholm 90 Island, X7S09S
W 900mm
D 600mm
H 75mm

OP OU IP EP EPP



Paris Island 360mm Deep



Paris 36, X7P04S
W 360mm
D 360mm
H 800mm

OP IL IP EL EP



Zurich Island 360mm Deep



Zurich 90 Island, X7Z09S
W 900mm
D 360mm
H 800mm

OP OU IP EP EPP



Zurich 120 Island, X7Z12S
W 1200mm
D 360mm
H 800mm

OP OU IP EP EPP

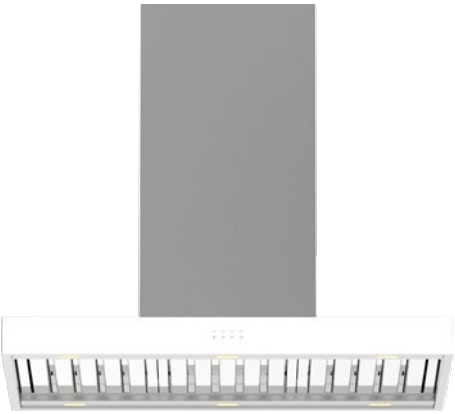


Rome Island 600mm Deep



Rome 90 Island (Black Glass Fascia), X7R09S
W 900mm
D 600mm
H 75mm

OP OU IP EP EPP

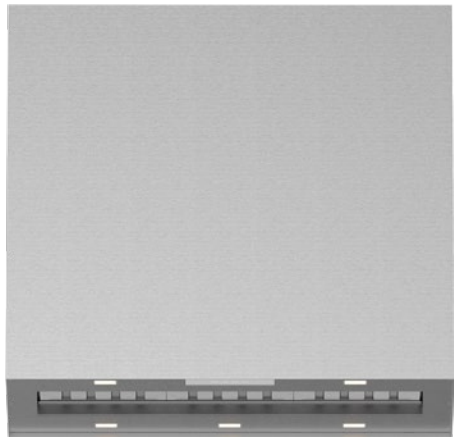


Rome 90 Island (White Glass Fascia), X7R09W
W 900mm
D 600mm
H 75mm

OP OU IP EP EPP

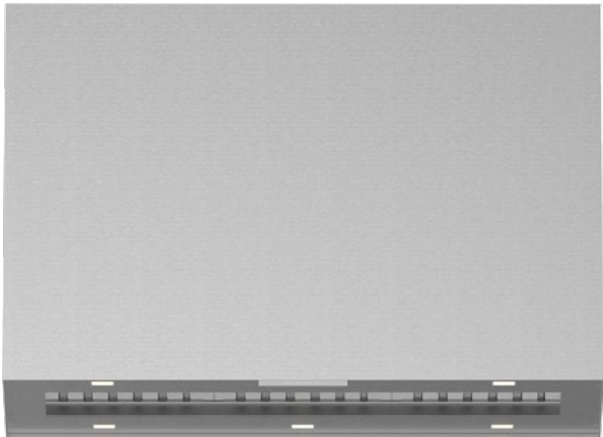


Helsinki Island 360mm Deep



Helsinki 90 Island, X7H09S
W 900mm
D 360mm
H 800mm

OP OU IP EP EPP



Helsinki 120 Island, X7H12S
W 1200mm
D 360mm
H 800mm

OP OU IP EP EPP



Vienna Island 600mm Deep



Vienna 90 Island, X7V09S
W 900mm
D 600mm
H 120mm

OP OU IP EP EPP



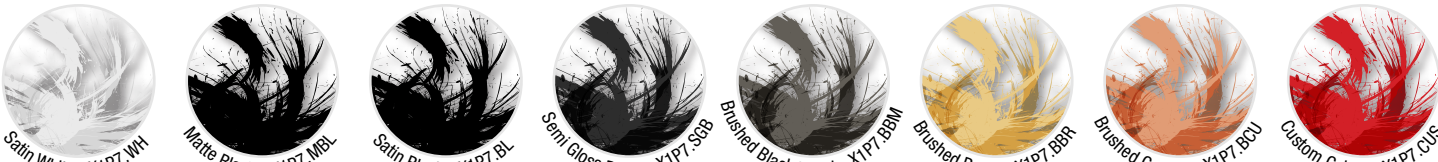
Vienna 120 Island, X7V12S
W 1200mm
D 600mm
H 120mm

OU IP EP EPP



OP On Board Power - 1020m³/hr -- OU On Board Ultra - 1680m³/hr -- IL Inline Lite - 800m³/hr -- IP Inline Pro - 1140m³/hr
EL External Lite - 800m³/hr -- EP External Pro - 1140m³/hr -- EPP External Pro Plus - 2010m³/hr

Available Finishes - Your Hood. Your Colour. Your Way.





Copenhagen 120 Cassette in Satin White

CEILING CASSETTES.

Copenhagen Cassette 680mm Deep



Copenhagen 120 Cassette, X9C12S
W 1200mm
D 680mm
H 152mm



EPP IP Twin EP Twin EPP Twin

IP Inline Pro - 1140m³/hr -- EP External Pro - 1140m³/hr -- EPP External Pro Plus - 2010m³/hr

Available Finishes - Your Hood. Your Colour. Your Way.



Satin White - X1P7.WH



Matte Black - X1P7.MBL



Satin Black - X1P7.BL



Semi Gloss Black - X1P7.SGB



Brushed Black Metal - X1P7.BBM



Brushed Brass - X1P7.BBR



Brushed Copper - X1P7.BCU



Custom Colour - X1P7.CUS



Helsinki 90 in Brushed Black Metal

ISLAND MOUNTED HOODS & CEILING CASSETTES

Specifications											
	Stockholm 90 Island	Rome 90 Island (Black Fascia)	Rome 90 Island (White Fascia)	Vienna 90 Island	Vienna 120 Island	Paris 36 Island	Zurich 90 Island	Zurich 120 Island	Helsinki 90 Island	Helsinki 120 Island	Copenhagen 120 Cassette
Model No.	X7S09S	X7R09S	X7R09W	X7V09S	X7V12S	X7P04S	X7Z09S	X7Z12S	X7H09S	X7H12S	X9C12S
Hood Mounting	Island Mounted Canopy										Cassette
Dimensions	Hood Width	900mm	900mm	900mm	900mm	1200mm	360mm	900mm	1200mm	900mm	1200mm
	Hood Depth	600mm					360mm				680mm
	Hood Fascia Height	75mm			120mm		800mm				152mm
Cooking Surface Coverage (cm)		75-100	75-100	75-100	75-100	100-120	60 - 75	75-100	100-120	75-100	100-120
Min Install Height		600mm									
Recommended Install Height		700-750mm									
Induction Suitable		●	●	●	●	●	●	●	●	●	●
Finish	AISI304 1.2mm Food Grade	●	●	●	●	●	●	●	●	●	●
	Proud Mount Cradle	○									
Filtration	Type: S-Flow Baffle	●	●	●	●	●	●	●	●	●	●
	Filter Quantity	3	3	3	3	4	1	3	4	3	4
Electronics	MasterMind	●	●	●	●	●	●	●	●	●	●
	Controls	MasterMind	MasterMind Touch Control		4-Button Backlit LED MasterMind Electronic Control						
	Wireless Remote	○	○	○	○	○	○	○	○	○	●
	Speed Settings	3 Speed + Boost Mode									
	Timer Function	Programmable Timer - 10min Increments									
	Auto Fan Shut Off	Auto Off After 2-Hours Of Inactivity									
Lighting	Type: LED - Warm White	●	●	●	●	●	●	●	●	●	●
	Type: LED - Cool White	○	○	○	○	○	○	○	○	○	○
	Lamp Quantity	6	6	6	6	8	2	5	5	5	6
	Front Panel	●	●	●	●	●	●	●	●	●	●
	Rear Panel	●	●	●	●	●	●	●	●	●	●
Exhaust	Outlet Position - Top	●	●	●	●	●	●	●	●	●	●
	Outlet Quantity	1	1	1	1	1	1	1	1	1	1 / 2
	Ducting (Remote Motor)	Dia. 200mm Zilikon Acoustic Flexi Ducting - Five (5) Meter Length Supplied									
	Ducting (Onboard Motor)	Power Motor - Dia. 150mm -- Ultra Motor - Dia.200mm -- Accessory Kits Available (ref. pp 69)									
On Board		X7S09S	X7R09S	X7R09W	X7V09S	X7V12S	X7P04S	X7Z09S	X7Z12S	X7H09S	X7H12S
		X9C12S									
On Board	Power 1020 - Top	1020m³/hr	--	--	--	--	.0P/T	.0P/T	--	.0P/T	--
	Ultra 1680 - Top	1680m³/hr	.0U/T	.0U/T	.0U/T	.0U/T	--	.0U/T	.0U/T	.0U/T	--
Inline	Lite 800	800m³/hr	--	--	--	--	.IL	.IL	.IL	.IL	.IL
	Pro 1140	1140m³/hr	.IP	.IP	.IP	.IP	.IP	.IP	.IP	.IP	.2IP
External	Lite 800	800m³/hr	--	--	--	--	.EL	.EL	.EL	.EL	.EL
	Pro 1140	1140m³/hr	.EP	.EP	.EP	.EP	.EP	.EP	.EP	.EP	.2EP
	Pro Plus 2010	2010m³/hr	.EPP	.EPP	.EPP	.EPP	--	.EPP	.EPP	.EPP	.EPP / .2EPP

● Standard Inclusion ○ Optional



PROUDLY AUSTRALIAN OWNED
DESIGNED & BUILT IN MELBOURNE



PREMIUM GERMAN MADE
MOTOR SYSTEMS



Select your hood style



Select your motor position



Select your motor size





New York 180 Island

whispair

UNDERMOUNT BBQ HOODS & CEILING CASSETTES.

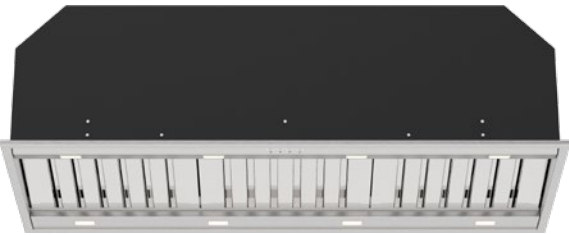
Washington Undermount 480mm Deep



Washington 90, X3W09S
W 860mm
D 480mm
H 330mm



EPP



Washington 120, X3W12S
W 1160mm
D 480mm
H 330mm



EPP

IP

Twin

EP

Twin

EPP

Twin



Washington 160, X3W16S
W 1560mm
D 480mm
H 330mm



IP

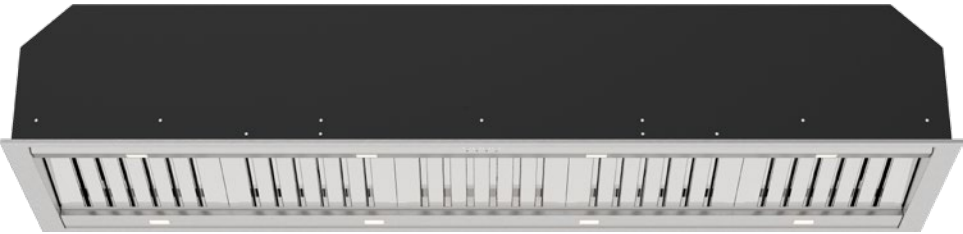
Twin

EP

Twin

EPP

Twin



Washington 200, X3W20S
W 1960mm
D 480mm
H 330mm



IP

Twin

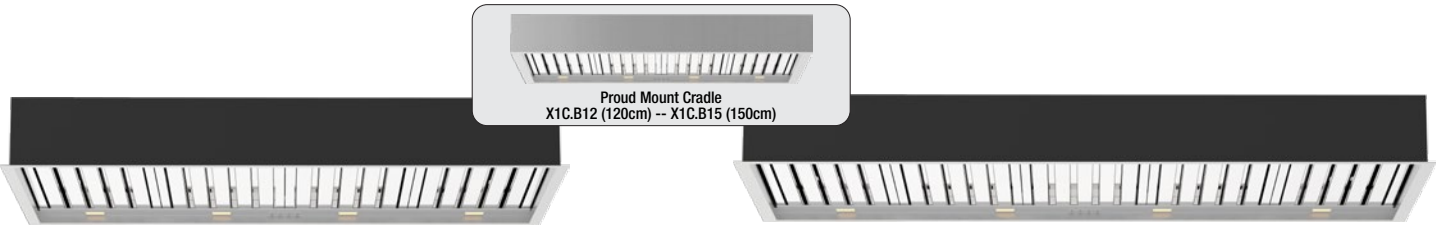
EP

Twin

EPP

Twin

Boston Cassette 680mm Deep



Boston 120, X9B12S
W 1200mm
D 680mm
H 152mm



EPP

IP

Twin

EP

Twin

EPP

Twin

Boston 150, X9B15S
W 1500mm
D 680mm
H 152mm



IP

Twin

EP

Twin

EPP

Twin

IP Inline Pro - 1140m³/hr -- EP External Pro - 1140m³/hr -- EPP External Pro Plus - 2010m³/hr

WALL & ISLAND CANOPY BBQ HOODS.

Montreal 100 750mm Deep



Montreal 100, X5M10S
W 1000mm
D 750mm
H 800mm



EPP

Chicago 120 Island 750mm Deep

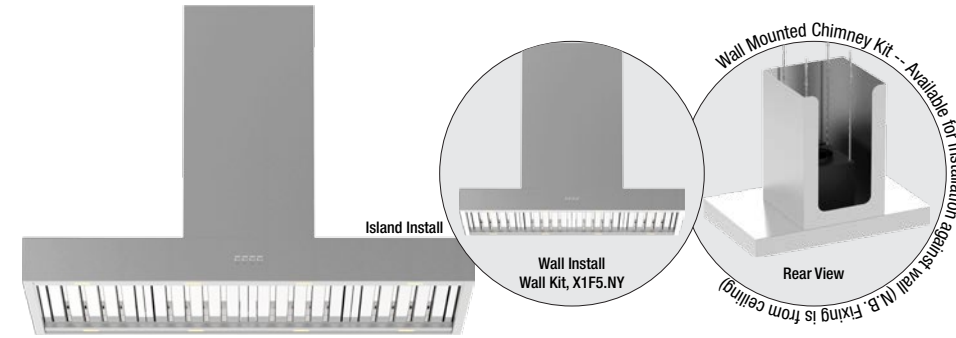


Chicago 120 Island, X7C12S
W 1200mm
D 750mm
H 400mm



EPP

New York 120 Island 750mm Deep

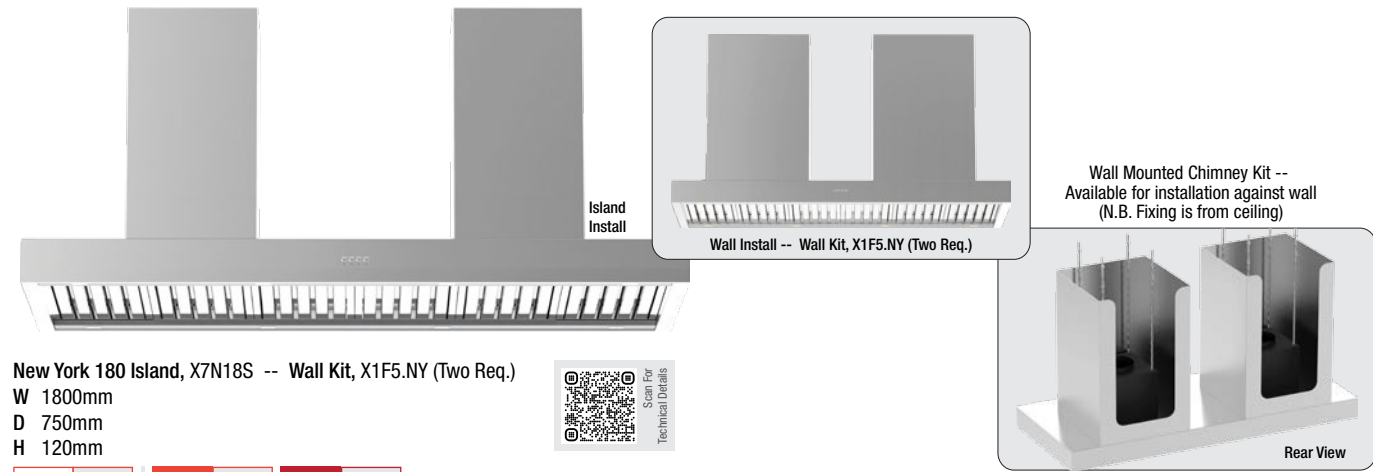


New York 120 Island, X7N12S -- Wall Kit, X1F5.NY
W 1200mm
D 750mm
H 120mm



EPP

New York 180 Island 750mm Deep



New York 180 Island, X7N18S -- Wall Kit, X1F5.NY (Two Req.)
W 1800mm
D 750mm
H 120mm



IP

Twin

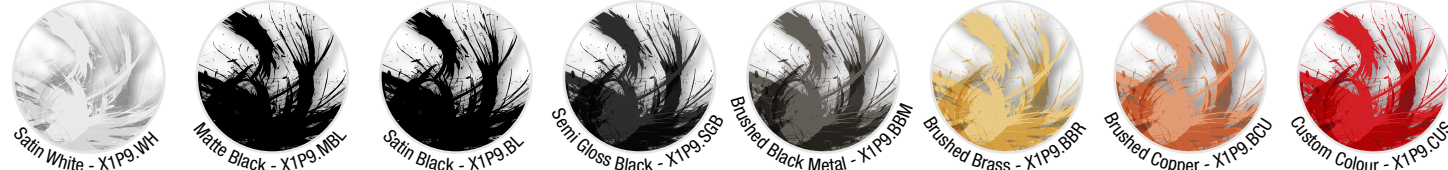
EP

Twin

EPP

Twin

Available Finishes - Your Hood. Your Colour. Your Way.





New York 180 Island

AL FRESCO BBQ HOODS.

Specifications												
			Washington 90	Washington 120	Washington 160	Washington 200	Boston 120	Boston 150	Montreal 100	Chicago 120 Island	New York 120 Island	New York 180 Island
Model No.			X3W09S	X3W12S	X3W16S	X3W20S	X9B12S	X9B15S	X5M10S	X7C12S	X7N12S	X7N18S
Hood Mounting			Built In (Undermount) - Flush or Proud Install (ref. pp 68)				Cassette		Wall	Island Mounted Canopy (Wall Optional)		
Dimensions	Hood Width		860mm	1160mm	1560mm	1960mm	1200mm	1500mm	1000mm	1200mm	1200mm	1800mm
	Hood Depth		480mm				680mm		750mm			
	Hood Height		330mm				152mm		120/350mm	400mm	120mm	
Cooking Surface Coverage (cm)			75-100	100-120	120-160	150-200	75-120	120-150	80-100	90-120	90-120	120-180
Min Install Height			1200mm				1200mm		1200mm			
Recommended Install Height			1200mm				1500mm (Max)		1200mm			
Induction Suitable			●	●	●	●	●	●	●	●	●	●
Char Grill Suitable			●	●	●	●	●	●	●	●	●	●
Finish	AISI316 1.2mm Marine Grade		●	●	●	●	●	●	●	●	●	●
	Proud Mount Cradle						○	○				
Filtration	Type: S-Flow Baffle		●	●	●	●	●	●	●	●	●	●
	Filter Quantity		2	3	4	5	4	5	3	4	4	6
Electronics	MasterMind		●	●	●	●	●	●	●	●	●	●
	Controls		4-Button Backlit LED <i>MasterMind</i> Electronic Control									
	Wireless Remote		●	●	●	●	●	●	●	●	●	●
	Speed Settings		3 Speed + Boost Mode									
	Timer Function		Programmable Timer - 10min Increments									
	Auto Fan Shut Off		Auto Off After 2-Hours Of Inactivity									
Lighting	Type: LED - Warm White		●	●	●	●	●	●	●	●	●	●
	Type: LED - Cool White		○	○	○	○	○	○	○	○	○	○
	Lamp Quantity		8	8	8	8	8	8	5	8	8	8
	Front Panel		●	●	●	●	●	●	●	●	●	●
	Rear Panel		●	●	●	●	●	●	●	●	●	●
Exhaust	Outlet Position - Top		●	●	●	●	●	●	●	●	●	●
	Outlet Position - Rear		○	○	○	○			○		○	○
	Outlet Quantity		1	1 / 2	2	2	1 / 2	2	1	1	1	2
	Ducting (Remote Motor)		Dia. 200mm <i>Zilikon</i> Acoustic Flexi Ducting - Five (5) Meter Length Supplied									
SELECT YOUR HOOD & MOTOR COMBINATION			X3W09S	X3W12S	X3W16S	X3W20S	X9B12S	X9B15S	X5M10S	X7C12S	X7N12S	X7N18S
Inline	Pro 1140	1140m³/hr	--	.2IP	.2IP	.2IP	.2IP	.2IP	--	--	--	.2IP
External	Pro 1140	1140m³/hr	--	.2EP	.2EP	.2EP	.2EP	.2EP	--	--	--	.2EP
External	Pro Plus 2010	2010m³/hr	.EPP	.EPP / .2EPP	.2EPP	.2EPP	.EPP / .2EPP	.2EPP	.EPP	.EPP	.EPP	.2EPP

● Standard Inclusion ○ Optional

 PROUDLY AUSTRALIAN OWNED
DESIGNED & BUILT IN MELBOURNE

 PREMIUM GERMAN MADE
MOTOR SYSTEMS

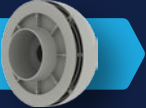
STEP 01

Select your hood style




STEP 02

Select your motor position



STEP 03

Select your motor size





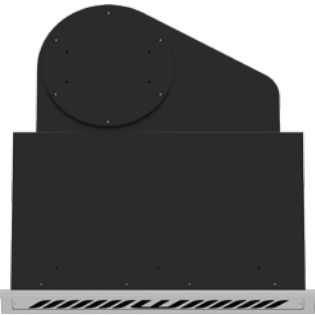
Barcelona 120 Make Up Air



Barcelona 120 Make Up Air

MAKE UP AIR SYSTEMS.

Barcelona 88mm Deep

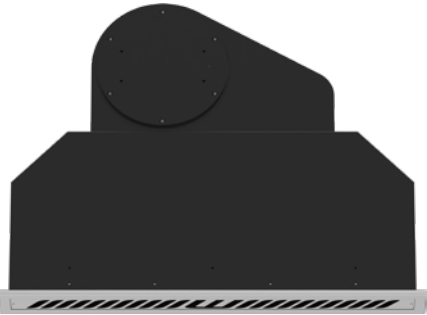


Barcelona 60, X2B06S
W 560mm
D 88mm
H 330mm

OA OAX



Scan For
Technical Details

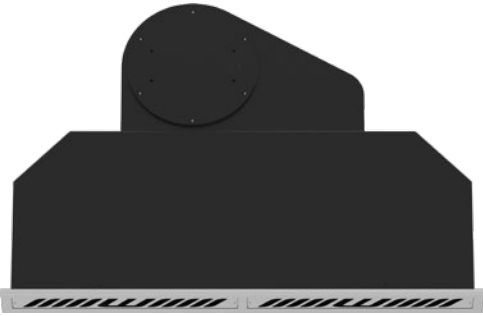


Barcelona 80, X2B08S
W 760mm
D 88mm
H 330mm

OA OAX



Scan For
Technical Details

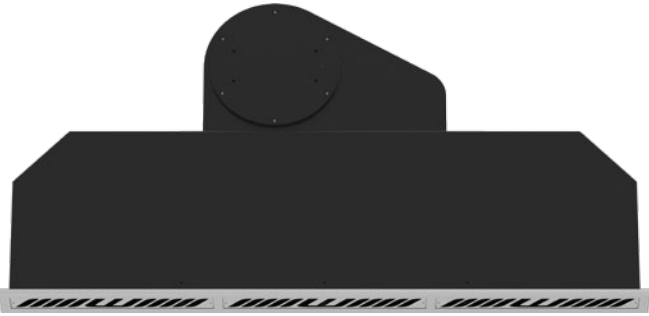


Barcelona 90, X2B09S
W 860mm
D 88mm
H 330mm

OA OAX



Scan For
Technical Details

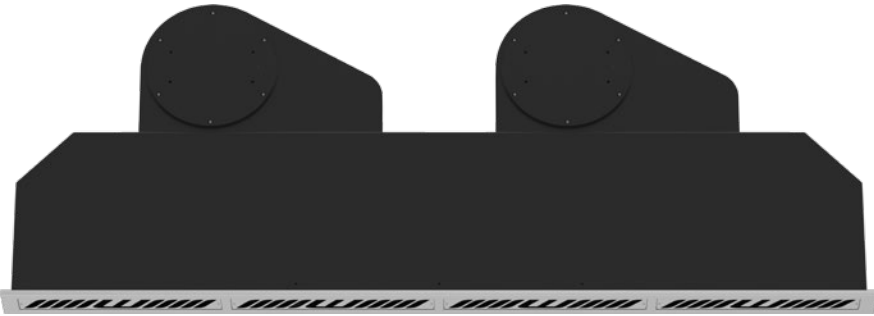


Barcelona 120, X2B12S
W 1160mm
D 88mm
H 330mm

OA OAX



Scan For
Technical Details



Barcelona 160, X2B16S
W 1560mm
D 88mm
H 330mm

OA Twin OAX Twin



Scan For
Technical Details

OA On Board Air - 550m³/hr -- OAX On Board AirX - 550m³/hr

Available Finishes - Your Hood. Your Colour. Your Way.



Satin White - X1P3.WH



Matte Black - X1P3.MBL



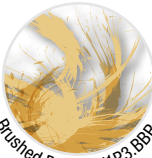
Satin Black - X1P3.BL



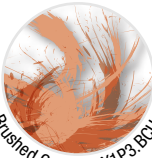
Semi Gloss Black - X1P3.SGB



Brushed Black Metal - X1P3.BBM



Brushed Brass - X1P3.BBR



Brushed Copper - X1P3.BCU



Custom Colour - X1P3.CUS



Barcelona 120 Make Up Air

MAKE UP AIR SYSTEMS.

Specifications								
		Barcelona 60	Barcelona 80	Barcelona 90	Barcelona 120	Barcelona 160		
Model No.		X2B06S	X2B08S	X2B09S	X2B12S	X2B16S		
Hood Mounting		Built In (Undermount) - Flush or Proud Install (ref. pp 68)						
Dimensions	Hood Width	560mm	760mm	860mm	1160mm	1560mm		
	Hood Depth	88mm						
	Hood Height	330mm						
Cooking Surface Coverage (cm)		50-75	70-90	75-100	100-120	120-160		
Min Install Height		600mm						
Recommended Install Height		750mm						
Induction Suitable		●	●	●	●	●		
Finish	AISI304 1.2mm Food Grade	●	●	●	●	●		
Vents	Type: W-Vent	●	●	●	●	●		
	Vent Quantity	1	1	2	3	4		
Electronics	MasterMind	●	●	●	●	●		
	Controls	Synchronised <i>MasterMind</i> Electronic Control						
	Wireless Remote	○	○	○	○	○		
	Speed Settings	3 Speed + Boost Mode						
	Timer Function	Programmable Timer - 10min Increments						
Auto Fan Shut Off		Auto Off After 2-Hours Of Inactivity						
Exhaust	Outlet Position - Top	●	●	●	●	●		
	Outlet Position - Rear	○	○	○	○	○		
	Outlet Quantity	1	1	1	1	2		
	Ducting (Onboard Motor)	Dia. 150mm <i>Zilikon</i> Acoustic Flexi Ducting - Five (5) Meter Length Supplied						
On Board			X2B06S	X2B08S	X2B09S	X2B12S	X2B16S	
	Air 550	550m³/hr	.0A	.0A	.0A	.0A	.20A	Compatible with On Board Power Motor & All Remote Motor Systems
	AirX 550	550m³/hr	.0AX	.0AX	.0AX	.0AX	.20AX	Compatible with On Board Ultra Motor

● Standard Inclusion ○ Optional



PROUDLY AUSTRALIAN OWNED
DESIGNED & BUILT IN MELBOURNE



PREMIUM GERMAN MADE
MOTOR SYSTEMS



whispair

Optional Electronic Accessories

X1.WREM

Wireless remote controller, to suit MasterMind electronic system



X1.LED4K

Optional Lighting (Replacement), Cool White LED, CCT 4500



Flue Extensions

X1F5.100 / X1F5.150

Wall Flue (Base) Piece - Length 1000mm / Length 1500mm



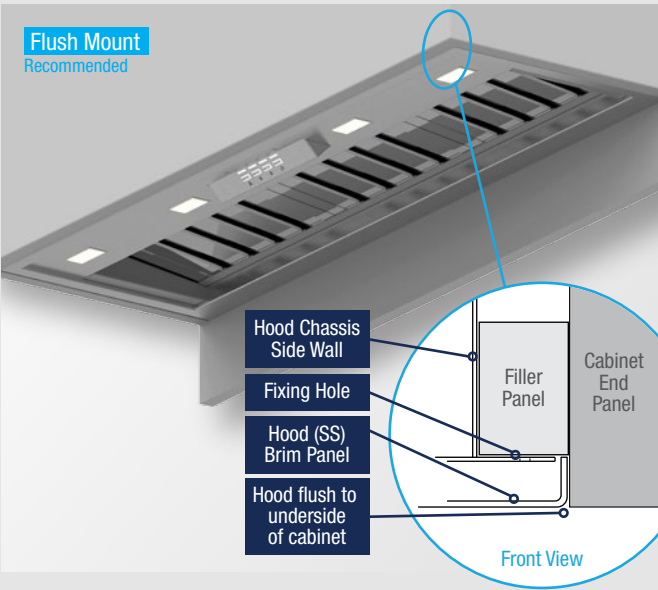
X1F7.108 / X1F7.138

Island Flue Piece - Length 1080mm / Length 1380mm

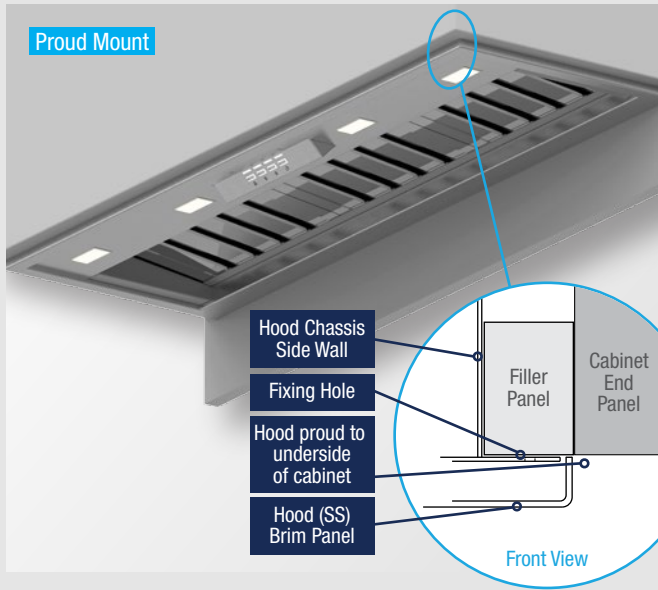


Undermount Installation Options

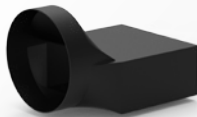
Flush Mount
Recommended



Proud Mount



On Board Motor System Accessories



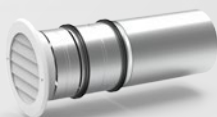
X1DK.TRANS

Transition Duct
To suit Ultra Motor (Top Duct)
To suit Rect Outlet (226mm x 97mm)
to Dia. 200mm



X1DK.WVENT

Rear Duct Kit
To suit Ultra Motor
With integrated back draft damper
To suit Rect Outlet (226mm x 97mm)



X1DK.WVENT150

Rear Duct Kit
To suit Power Motor
With back draft damper
To suit 150mm Outlet

On Board Motor System Ducting Kits

X1DK.150TILE / X1DK.200TILE

Tile Roof Ducting Kit to suit 150mm or 200mm Outlet

Includes

- A. Rigid Duct - Galvanised Steel - L 625mm
- B. Zilikon Flexi Ducting - 5 Mtr Length
- C. Roof Cowl - Galvanised Steel
- D. Silicone Flashing to suit Tile Roof
- F. Rigid Duct Mounts (2x)
- G. Stainless Steel Pipe Clamps (2x)



X1DK.150MET / X1DK.200MET

Metal Roof Ducting Kit to suit 150mm or 200mm Outlet

Includes

- A. Rigid Duct - Galvanised Steel - L 625mm
- B. Zilikon Flexi Ducting - 5 Mtr Length
- C. Roof Cowl - Galvanised Steel
- E. Silicone Flashing to suit Metal Roof
- F. Rigid Duct Mounts (2x)
- G. Stainless Steel Pipe Clamps (2x)

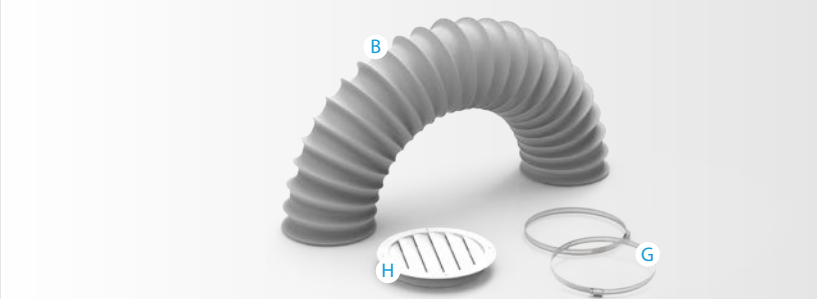


X1DK.150WALL / X1DK.200WALL

Through Wall Ducting Kit to suit 150mm or 200mm Outlet

Includes

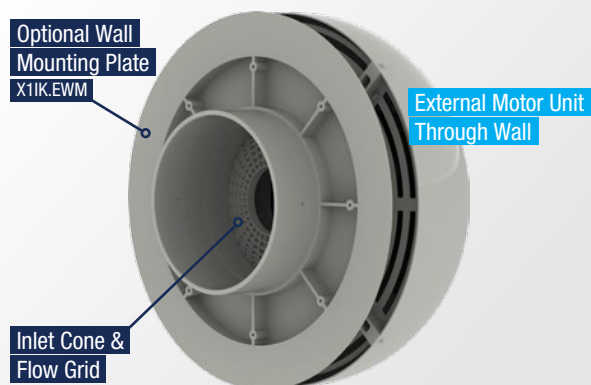
- B. Zilikon Flexi Ducting - 5 Mtr Length
- G. Stainless Steel Pipe Clamps (2x)
- H. Wall Vent - White Paint Finish



Product Features	
Motor Mounting	External - Through Roof or Wall Mount
Extraction Levels Available	Model: EL.800 Lite - 800 m³/hr (222 L/s @ 50pa)
	Model: EP.1140 Pro - 1140 m³/hr (317 L/s @ 50pa)
	Model: EPP.2010 Pro Plus - 2010 m³/hr (558L/s @ 50pa)
Finish	High Grade Galvanised Steel with Powder Coated Finish - Colour: Shale Grey
Ducting	Dia. 200mm <i>Zilikon</i> Flexi Ducting Five (5) Metre Length - Supplied
Duct Clamps	Dia. 200mm (Stainless Steel) - 2x Supplied
BAL Rating	BAL-40 (with X1IK.MESH installed)
Fan Power Supply	Cable Length: Three (3) Metres
Sound Pressure Level (Outside)	EL.800: 52.7dB(A)*
	EP.1140: 58.5dB(A)*
	EPP.2010: 62.8dB(A)*
* Nominal Sound Pressure Level on Boost (Max) Speed Outside Level @ 1M & System Pressure 50pa	



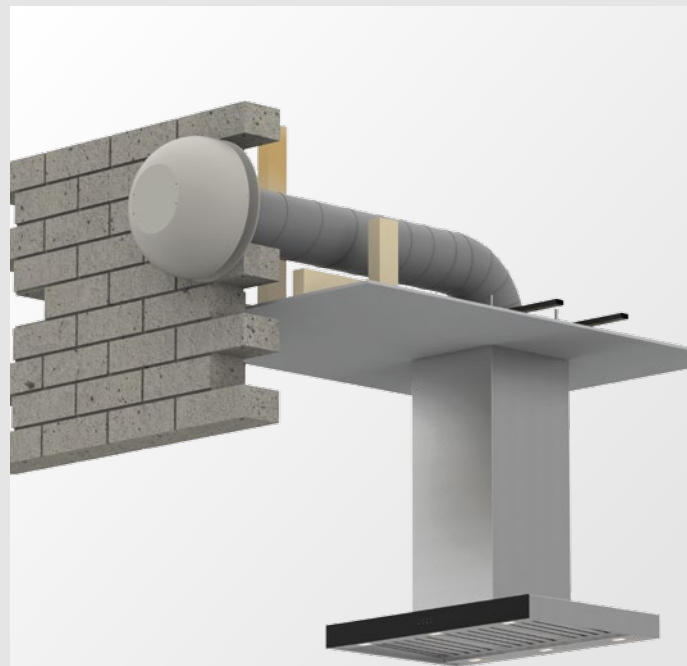
External Motor Unit
Through Roof



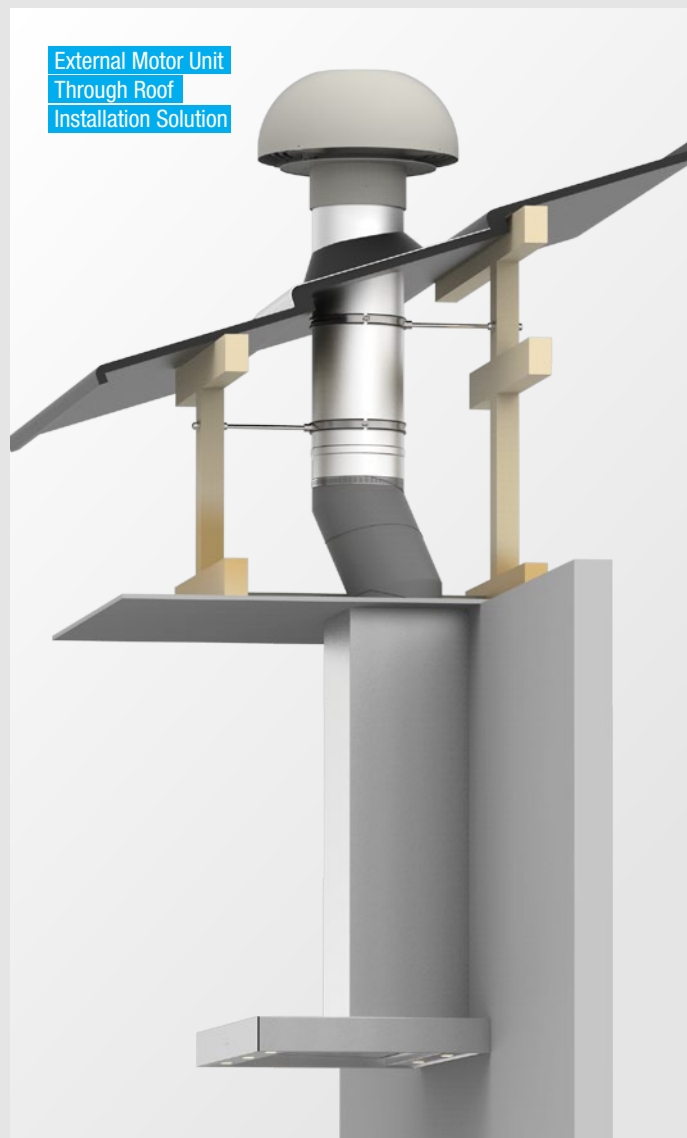
Optional Wall
Mounting Plate
X1IK.EWM

External Motor Unit
Through Wall

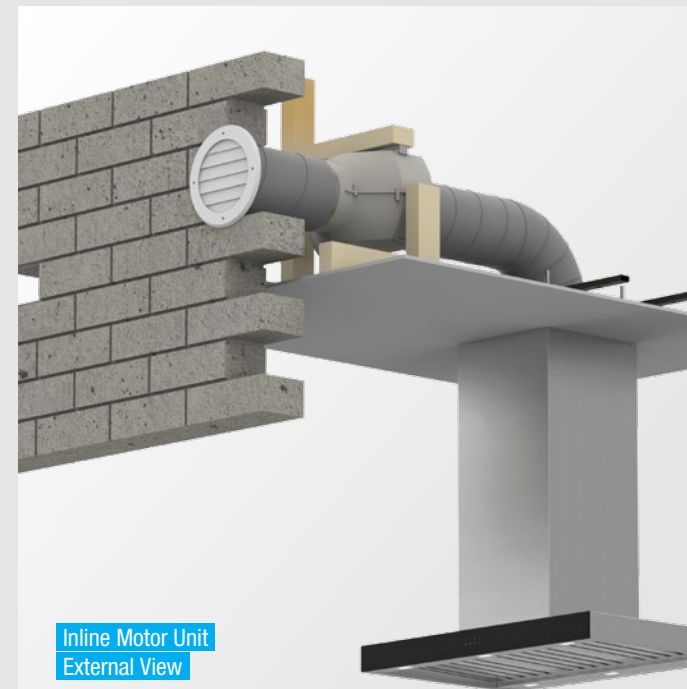
Inlet Cone &
Flow Grid



External Motor Unit
Through Wall Installation Solution



External Motor Unit
Through Roof
Installation Solution

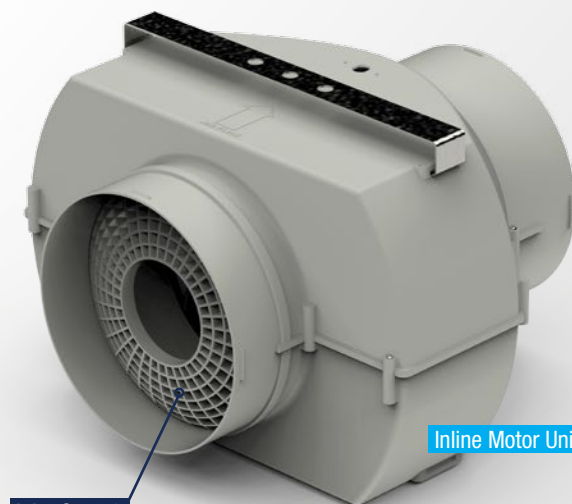


Inline Motor Unit
External View



Inline Motor Unit
Internal View

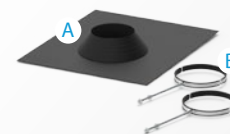
Product Features	
Motor Mounting	Inline - Through Wall or Eave
Extraction Levels Available	Model: IL.800 Lite - 800 m³/hr (222 L/s @ 50pa)
	Model: IP.1140 Pro - 1140 m³/hr (317 L/s @ 50pa)
Finish	High Grade FR ABS Plastic Colour: Shale Grey
Ducting	Dia. 200mm <i>Zilikon</i> Flexi Ducting Five (5) Metre Length - Supplied
Duct Clamps	Dia. 200mm (Stainless Steel) - 4x Supplied
Vent	Dia. 220mm Aluminium with fine mesh liner and Powder Coat Finish - Colour: White - 1x Unit Supplied
BAL Rating	BAL-40
Fan Power Supply	Cable Length: Three (3) Metres
Sound Pressure Level (Outside)	IL.800: 52.7dB(A)*
	IP.1140: 58.5dB(A)*
	* Nominal Sound Pressure Level on Boost (Max) Speed Outside Level @ 1M & System Pressure 50pa



Inlet Cone &
Flow Grid

Inline Motor Unit

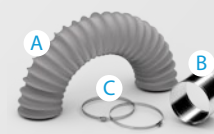
Remote Motor Systems Accessories



X1IK.200TILE To suit Tile Roof
Includes A. Silicone Flashing to suit Tile Roof (1x)
B. Rigid Duct Mounts - suits dia. 200mm (2x)



X1IK.200MET To suit Metal Roof
Includes A. Silicone Flashing to suit Metal Roof (1x)
B. Rigid Duct Mounts - suits dia. 200mm (2x)



X1IK.200DUCT Flexible Duct Extension
Includes A. Dia. 200mm *Zilikon* Ducting - 5mtr length (1x)
B. External Duct Connector - suits dia. 200mm (1x)
C. Stainless Steel Pipe Clamps - suits dia. 200mm (2x)



X1IK.EWM Optional Wall Mounting Bracket



X1IK.MESH Optional BAL rated mesh, BAL-40



X1PE.MO
"Monument" Finish
External Motor Colour

X1PE.CUS
Custom Finish
External Motor Colour

Duct Components		
A	X1RD.150L067	Rigid Duct - 675mm Length, Dia. 150mm
	X1RD.200L067	Rigid Duct - 675mm Length, Dia. 200mm
	X1RD.150L135	Rigid Duct - 1350mm Length, Dia. 150mm
	X1RD.200L135	Rigid Duct - 1350mm Length, Dia. 200mm
B	X1RD.15090D	90 Degree Elbow, Dia. 150mm
	X1RD.20090D	90 Degree Elbow, Dia. 200mm
C	X1RD.15045D	45 Degree Elbow, Dia. 150mm
	X1RD.20045D	45 Degree Elbow, Dia. 200mm
D	X1RD.150BDD	Back Draft Damper, Dia. 150mm
	X1RD.200BDD	Back Draft Damper, Dia. 200mm
E	X1RD.T150/200	Transition Duct, Dia. 150mm to Dia. 200mm
F	X1RD.150HAT	Roof Mushroom Vent with mesh, Dia. 150mm - BAL Rating: 40
	X1RD.200HAT	Roof Mushroom Vent with mesh, Dia. 200mm - BAL Rating: 40
G	X1RD.150ECON	External Duct Connector, Dia. 150mm
	X1RD.200ECON	External Duct Connector, Dia. 200mm
H	X1RD.150ICON	Internal Duct Connector, Dia. 150mm
	X1RD.200ICON	Internal Duct Connector, Dia. 200mm
I	X1RD.FLASHTILE	Silicone Roof Flashing, suits Tile Roof - BAL Rating: 40
J	X1RD.FLASHMET	Silicone Roof Flashing, suits Metal Roof - BAL Rating: 40
K	X1RD.150VENT	Wall / Eave Vent with mesh, Dia. 150mm - BAL Rating: 40
	X1RD.200VENT	Wall / Eave Vent with mesh, Dia. 200mm - BAL Rating: 40
L	X1RD.150RDM	Rigid Duct Mounts with threaded rod, Dia. 150mm (Pair)
	X1RD.200RDM	Rigid Duct Mounts with threaded rod, Dia. 200mm (Pair)
M	X1RD.150SSPC	Stainless Steel Pipe Clamps, Dia. 150mm (Pair)
	X1RD.200SSPC	Stainless Steel Pipe Clamps, Dia. 200mm (Pair)



Twin Outlet Wall / Eave Kit

X1DK.300WALL

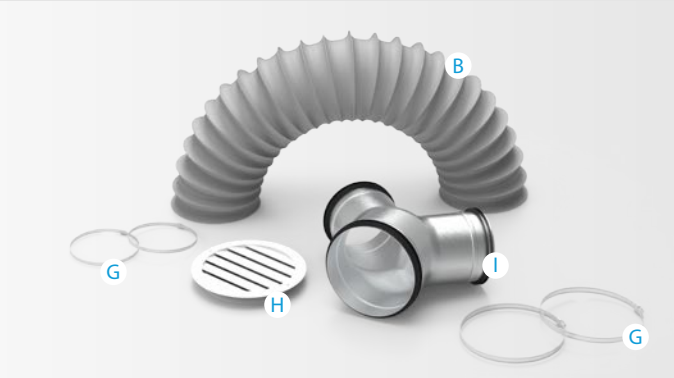
Through Wall / Eave Ducting Kit to suit Twin 200mm Outlets to 300mm Vent

- Includes
- B. Zilikon Flexi Ducting - Dia. 300mm - 5 Mtr Length

G. Stainless Steel Pipe Clamps (4x)

H. Wall Vent - White Paint Finish

I. Y-Junction - Dia. 300mm to 2x Dia. 200mm



TERMS & CONDITIONS

Due to ongoing research and development, the manufacturer reserves the right to change specifications without notice. If specifications are critical to end use, please ask your local retail agent. This information is provided without prejudice to the standard terms and conditions of the sale of the distributor. This brochure supersedes all previous brochures. All due care has been taken while compiling this brochure at the time of print, however no responsibility is taken for error.

“Whispair”, “KleenAir”, “S-Flow” and “Zilikon” are registered trademarks of Haus Group Holdings Pty Ltd. Whispair is proudly Australian owned.

All material issued is Copyright © 2022. No material can be reproduced without written permission of Haus Group Australia Pty Ltd or Haus Group New Zealand Ltd.

Issued October 2022.

WARRANTY

The experience you have with our product is important to us.

All Whispair rangehoods and on board fan motors come with a comprehensive 5–Year parts and labour warranty.

All Whispair remote fan motor solutions come with a 10–Year replacement warranty.

We believe in our products so much that we also offer a lifetime warranty on electronic parts including lighting. Terms and Conditions and Fair Use Policy applies.



5 YEAR WARRANTY
COMPREHENSIVE PARTS & LABOUR



10 YEAR WARRANTY
REPLACEMENT REMOTE FAN MOTOR



LIFETIME
REPLACEMENT PARTS WARRANTY